

(No Model.)

6 Sheets—Sheet 1.

S. A. DURFEE.
HAND PACKING CASE.

No. 524,463.

Patented Aug. 14, 1894.

Fig. 1.

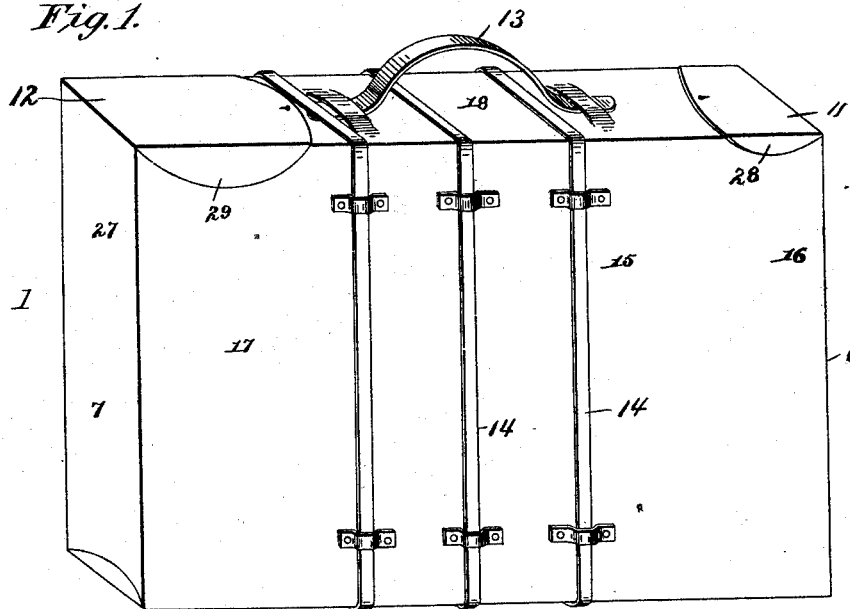
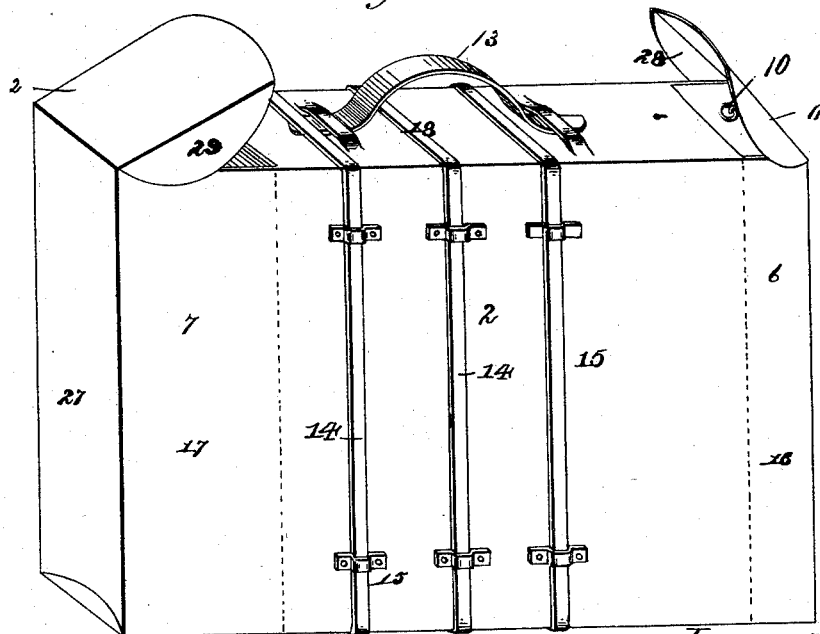


Fig. 2.



Witnesses:

Geo. S. Durfee
Charles L. Arnold Jr

Inventor:

Sarah A. Durfee

(No Model.)

6 Sheets—Sheet 2.

S. A. DURFEE.
HAND PACKING CASE.

No. 524,463.

Patented Aug. 14, 1894.

Fig. 3.

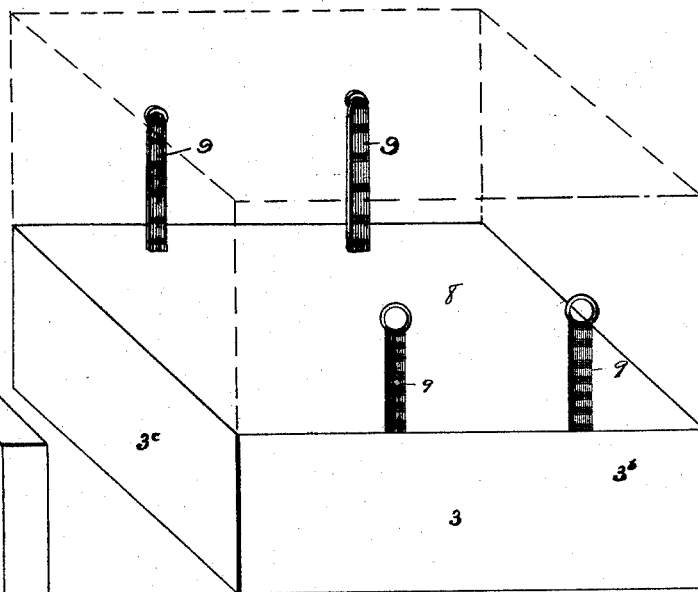


Fig. 5.

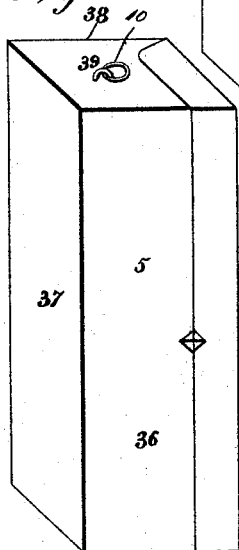


Fig. 6.

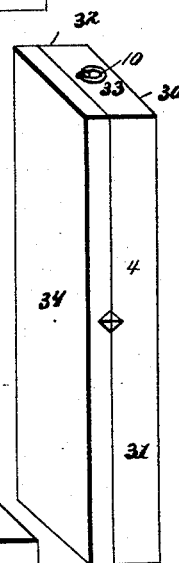
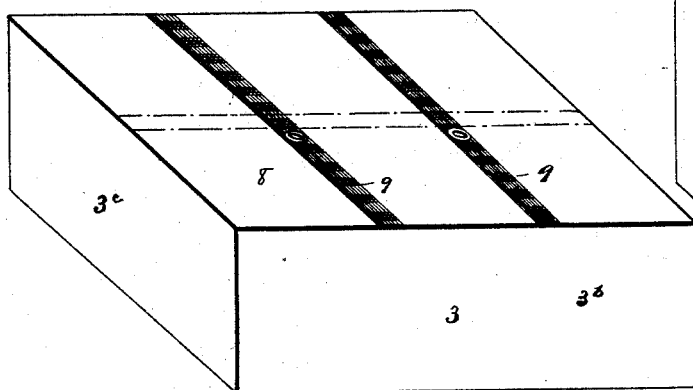


Fig. 4.



Witnesses:

Geo. S. Durfee
Charles L. Griswold Jr.

Inventor:

Sarah A. Durfee

(No Model.)

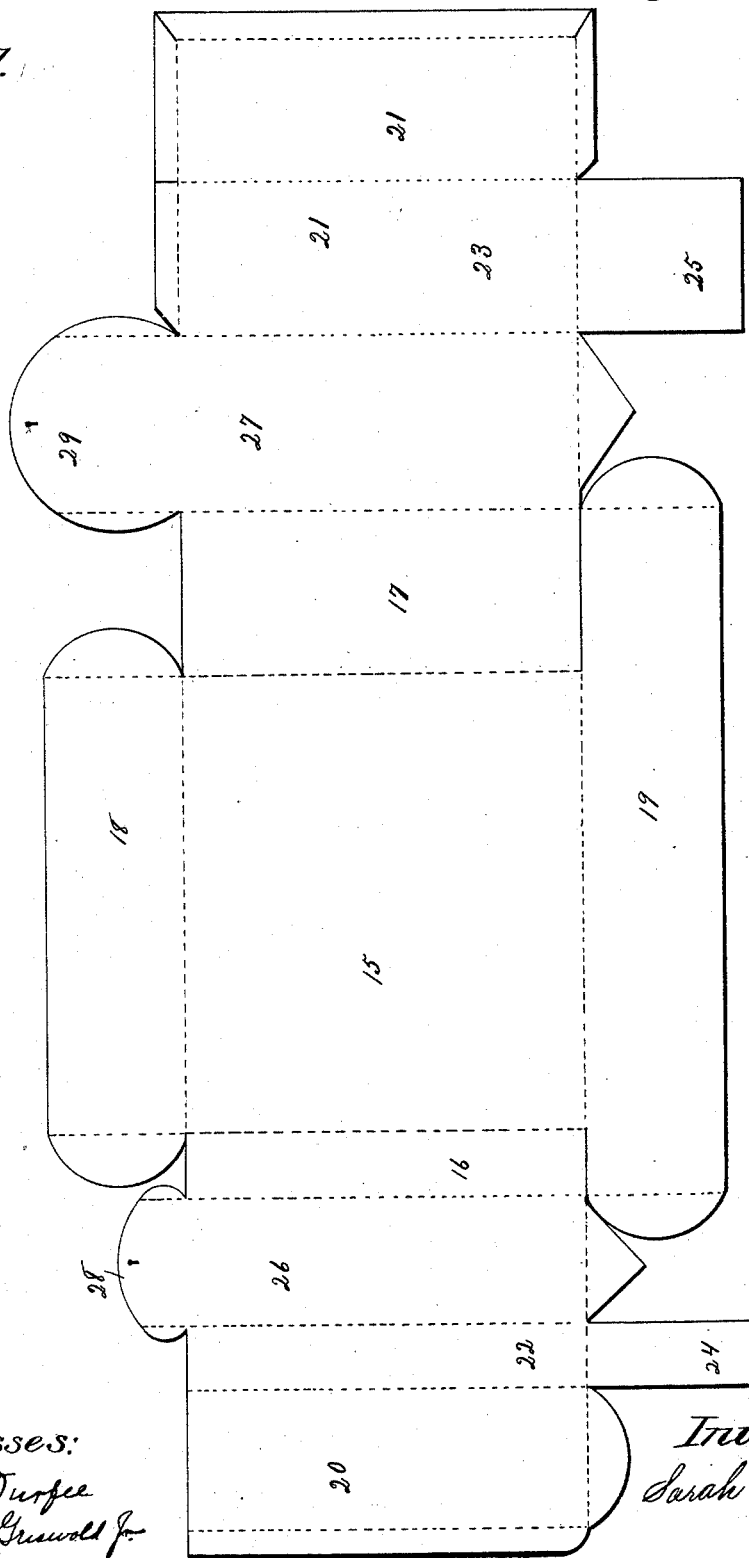
6 Sheets—Sheet 3.

S. A. DURFEE.
HAND PACKING CASE.

No. 524,463.

Patented Aug. 14, 1894.

Fig. 7.



Witnesses:
Geo. S. Durfee
Charles L. Griswold Jr.

Inventor:
Sarah A. Durfee

(No Model.)

6 Sheets—Sheet 4.

S. A. DURFEE.
HAND PACKING CASE.

No. 524,463.

Patented Aug. 14, 1894.

Fig. 8.

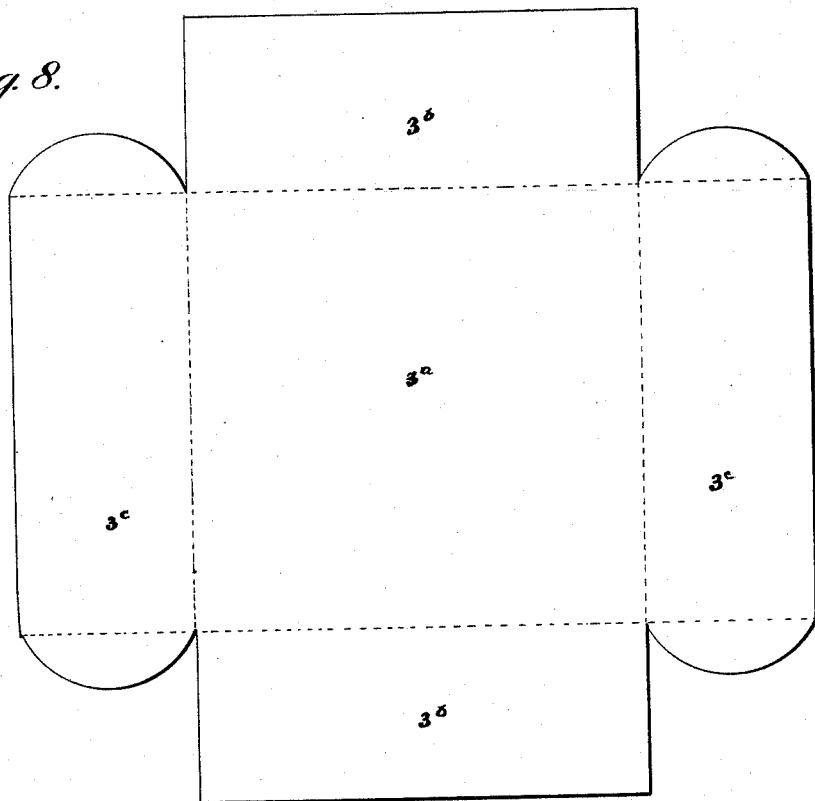
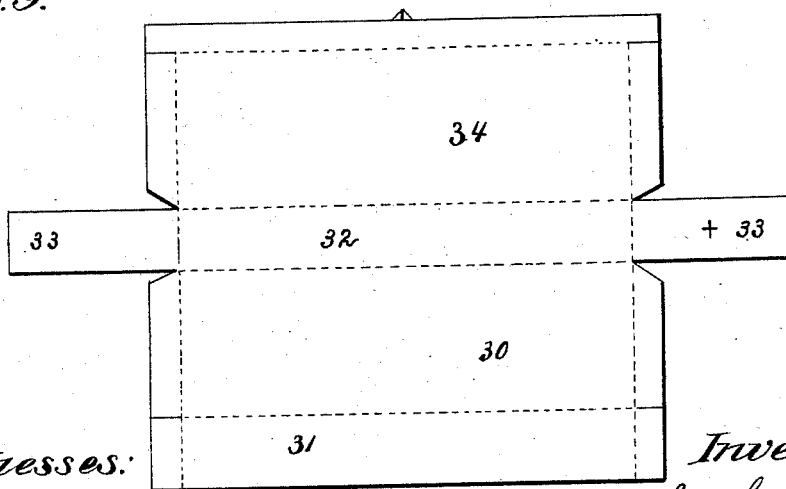


Fig. 9.



Witnesses:

Geo. L. Durfee.
Charles L. Grinnold Jr.

Inventor:

Sarah A. Durfee.

(No Model.)

6 Sheets—Sheet 5.

S. A. DURFEE.
HAND PACKING CASE.

No. 524,463.

Patented Aug. 14, 1894.

Fig. 10.

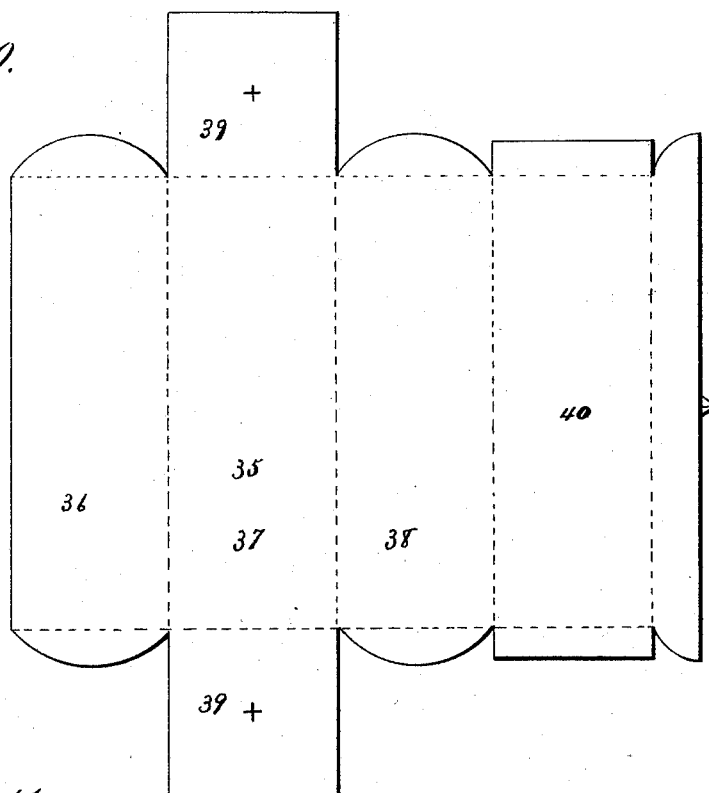
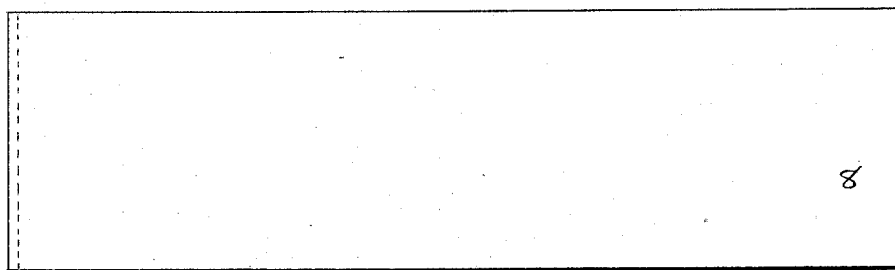


Fig. 11.



Witnesses:
Geo. S. Durfee
Charles L. Grewold Jr.

Inventor
Sarah A. Durfee

(No Model.)

6 Sheets—Sheet 6.

S. A. DURFEE.
HAND PACKING CASE.

No. 524,463.

Patented Aug. 14, 1894.

Fig. 12.

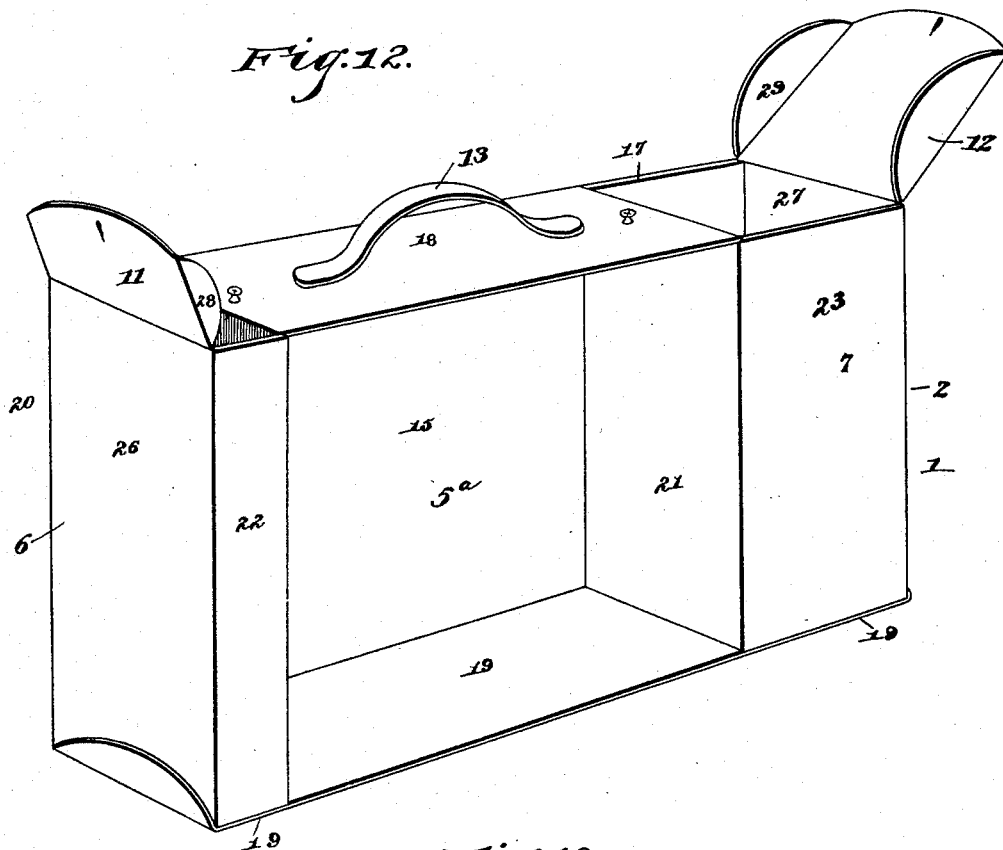
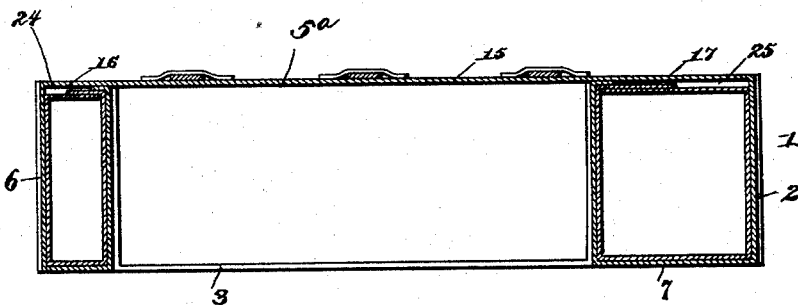


Fig. 13



Inventor

Sarah A. Durfee,

Witnesses

B. S. Ober
H. J. Riley

By *net* Attorneys.

C. A. Snow & Co.

UNITED STATES PATENT OFFICE.

SARAH A. DURFEE, OF DECATUR, ILLINOIS.

HAND PACKING-CASE.

SPECIFICATION forming part of Letters Patent No. 524,463, dated August 14, 1894.

Application filed August 18, 1892. Serial No. 443,428. (No model.)

To all whom it may concern:

Be it known that I, SARAH A. DURFEE, a citizen of the United States of America, residing at Decatur, in the county of Macon and State of Illinois, have invented a new, useful, and convenient Hand Packing-Case for the use of Ladies and Gentlemen Traveling, of which the following is a specification.

The invention relates to improvements in hand packing cases.

The object of the present invention is to provide for travelers, a simple and inexpensive packing case, adapted to be conveniently carried by hand, and designed for holding clothes, toilet articles, &c., and capable of permitting ready access to a portion of its contents, without unstrapping it.

The invention consists in the construction and novel combination and arrangement of parts hereinafter fully described, illustrated in the accompanying drawings, and pointed out in the claims hereto appended.

In the drawings—Figure 1 is a perspective view of a hand packing case constructed in accordance with this invention. Fig. 2 is a similar view, showing the covers of the end compartments raised. Fig. 3 is a detail perspective view of the main box or tray, the flexible covering being open. Fig. 4 is a similar view, the flexible covering being folded to close the box or tray. Figs. 5 and 6 are detail perspective views of the supplemental end boxes. Fig. 7 is a plan view of the blank of the casing. Figs. 8, 9 and 10 are similar views, showing the blanks of the main box or tray and the supplemental end boxes. Fig. 11 is a plan view of the blank of the flexible covering of the main box or tray. Fig. 12 is a perspective view of the casing the main box or tray and the supplemental end boxes being removed. Fig. 13 is a horizontal sectional view of the case.

Like numerals of reference indicate corresponding parts in all the figures of the drawings.

1 designates a hand packing case comprising a casing 2, a main box or tray 3, and supplemental end boxes 4 and 5; the casing is provided with a central rectangular compartment 5^a open at one side, and receiving the main box or tray 3; and at the ends of the casing are vertically disposed compartments 6

and 7, respectively receiving the supplemental end boxes 4 and 5.

The main box or tray 3 consists of a bottom and four sides, the top being open, and being provided at the upper edges of the sides with a flexible covering 8 adapted to be straightened out vertically, as illustrated in Fig. 3 of the accompanying drawings, or as far as practicable, to afford access to the box or tray, and capable of being folded as shown in Fig. 4 of the accompanying drawings, for closing the box or tray. When the flexible covering is in the latter position it is secured by flexible straps 9, each composed of two sections having their outer ends secured to the upper edges of the opposite sides of the box or tray, and provided at their inner ends with a suitable fastening device, such as a button or ring, or the like. The box or tray 3 is placed in the compartment 5^a of the casing with its open top inside, and the bottom of the main box or tray closes the casing at the outer side of the compartment 5^a.

The supplemental end boxes 4 and 5 for convenience are preferably constructed of different sizes; they are inserted endwise in their respective compartments, and are provided at each end with a ring 10 to facilitate withdrawal. Each box is provided with a hinged lid having a suitable fastening device, and the end compartments 6 and 7 are provided at their tops with hinged covers 11 and 12 having suitable locking devices. By this construction and arrangement of the boxes either one may be removed without removing the others, and either end box is accessible without unstrapping the case.

The casing is provided at its top with a handle 13; and the main box or tray is secured in the compartment 5^a by straps 14 provided with buckles, and secured by and passing through suitable keepers of the casing.

The case may be constructed of leather, or any other suitable material; and the casing is constructed of a single piece of such material as illustrated in Fig. 7 of the accompanying drawings. The central rectangular portion 15 of the blank forms the side of the central compartment 5^a; the extensions 16 and 17, which are disposed longitudinally of the blank, form the adjacent sides of the end compartments, and are direct continuations

of the side of the central compartment. The lateral extensions 18 and 19 of the blank, adjacent to the central portion 15, form the top and the bottom of the central compartment 5^a, and the lateral extension 19 is elongated, to provide bottoms for the end compartments, the bottoms of the latter being continuations of the bottom of the central compartment. The ends 20 and 21 of the blank are folded to form the other three sides of the end compartment; and the intermediate folded portions 22 and 23 being provided with lateral extensions 24 and 25 to form the bottoms proper of the end compartments, the extended portions or terminals of the lateral extensions 19 being arranged beneath the bottoms 24 and 25, and increasing the strength of the casing. The inner folded portions 26 and 27 of the ends of the blank are provided with circular lateral extensions 28 and 29, which form the covers of the end compartments. The edges of the folded ends, the terminals of the lateral extensions 18 and 19; and the inner portions 26 and 27 are provided with flaps, as shown, to assist in attaching the adjacent edges of the parts for forming the casing and these flaps may be secured by stitching, or by an adhesive material.

The main box or tray is constructed of a blank, as illustrated in Fig. 8 of the accompanying drawings, which blank consists of a central rectangular portion provided at its sides with extensions 3^b and 3^c and the latter are folded up in a vertical position, and secured together to form a box. The flexible covering for the main box or tray consists of an oblong strip of fabric attached as before described.

The smaller box 4 is constructed of a blank having a rectangular portion 30 to form the bottom, an adjacent outer extension or portion 31 to form the front of the box, and intermediate oblong portion 32 to provide the back, and the latter has end extensions 33 which form the ends of the box. The blank is provided adjacent to the portion 32 with a rectangular portion 34 forming the top of the lid and provided at its side and outer edges with extensions to form the front and end flanges of the lid. By folding the portions 31 and 32 vertically at right angles to the part 30, the front and back of the box are produced, and the extensions 33 may be then swung in horizontally to close the ends of the box. The remainder of the blank will readily fold to form the lid of the box.

The blank 35, which forms the larger box, is divided off into three rectangular portions 36, 37 and 38 forming, respectively, the front, bottom and rear side of the box; and the in-

termediate portion 37, is provided with extensions 39, which fold vertically to form the ends of the box. The end portion 40 of the blank forms a lid, and is divided off in substantially the same manner as the lid of the smaller box.

It will be seen that the case is constructed in a simple and economic manner, that the various parts are each constructed of a single piece of material, that the blanks may be readily folded to form the casing and the boxes or trays, and that there is very little waste.

Changes in the form, proportion and the minor details of construction may be resorted to without departing from the principle or sacrificing any of the advantages of this invention.

What I claim is—

1. A hand case, comprising a casing provided at its ends with vertical compartments extending from the bottom to the top and open at the latter; said casing having a central compartment open at one side and permanently closed at the top, bottom and other side, the removable boxes arranged in the end compartments, and the tray arranged edgewise in the central compartment and having its bottom completing the adjacent side of the casing, substantially as described.

2. A hand case, comprising the casing having the vertical end compartments with open tops, and provided with the central compartment open at one side and permanently closed at the top, bottom and other side, the tray arranged edgewise in the central compartment and having its bottom completing the adjacent side of the casing, the hinged covers arranged at the top of the casing adjacent to the end compartments, and the handle arranged on the top of the casing between the end compartments, substantially as described.

3. In a hand case, the casing constructed of a single piece of material consisting of the central rectangular portion 15 having longitudinal extensions 16 and 17 and forming one side of the casing, the lateral extensions forming the top and bottom of the casing, the folded end portions 20 and 21 forming with the extensions 16 and 17 the end compartments, the cover extensions, and extensions 24 and 25 reinforcing the bottoms of the end compartments, substantially as described.

SARAH A. DUFEE.

Witnesses:

GEO. S. DUFEE,

CHARLES L. GRISWOLD, Jr.