

(No Model.)

M. LOWY.
HAND BAG, SATCHEL, OR VALISE.

No. 524,466.

Patented Aug. 14, 1894.

Fig. 1.

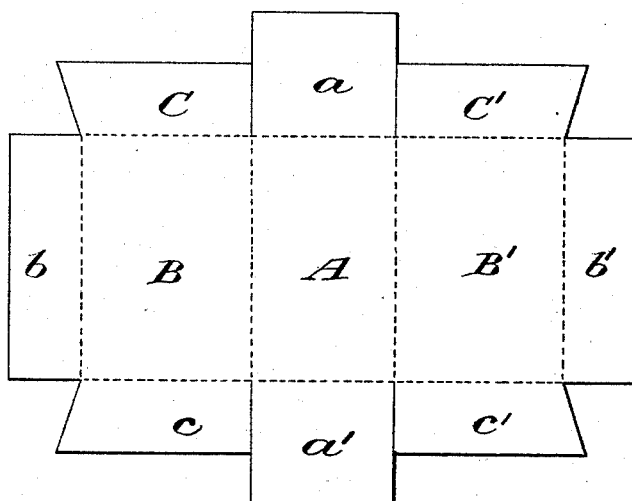


Fig. 2.

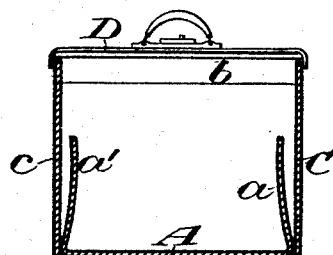


Fig. 3.

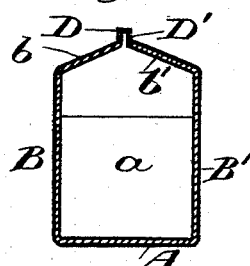
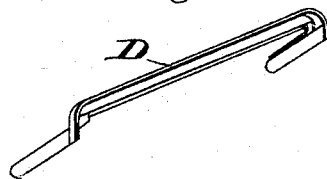


Fig. 4.



Witnesses:
George Barry,
C. Sundgren

Inventor:
Mace Lowy,
by attorneys
Brown & Swann

UNITED STATES PATENT OFFICE.

MAX LOWY, OF NEW YORK, N. Y.

HAND-BAG, SACHEL, OR VALISE.

SPECIFICATION forming part of Letters Patent No. 524,466, dated August 14, 1894.

Application filed April 10, 1894. Serial No. 507,052. (No model.)

To all whom it may concern:

Be it known that I, MAX LOWY, of New York, in the county and State of New York, have invented a new and useful Improvement in Hand-Bags, Satchels, or Valises, of which the following is a specification.

My invention relates to an improvement in hand bags, satchels, valises and the like, with the object in view of providing a convenient bag at low cost.

The particular form of bag which I have chosen to represent my invention, is what is commonly known as the cabinet, in which the sides and ends of the bag extend upwardly from the bottom in planes substantially at right angles to the bottom and the cover of the bag is made of two flaps hinged at the tops of the sides of the bag so as to meet at a point above the plane of the top edges of the sides to give a slanting position to the flaps.

In the accompanying drawings, Figure 1 is a view of the blank from which the body of the bag is formed, the dotted lines showing the creases and the full lines the cuts. Fig. 2 is a vertical longitudinal section through the completed bag. Fig. 3 is a transverse vertical section through the same, and Fig. 4 is a view in detail of one of the flap frames.

The gist of my invention lies in forming the body of the bag; including the flaps for the cover, and the pockets at the ends; in one piece of material, and in the combination with the folding flaps of frame pieces which extend only across the free edges and ends of the flaps.

Referring to the blank shown in Fig. 1, the portion of the blank which is to form the bottom of the bag is denoted by A; the portion to form the sides of the bag by B, B'; the portion to form the flaps by b, b'; the portion to form the inner walls of the pockets at the ends by a, a'; the portions to form one end of the bag by C, C'; and the portions to form the opposite end of the bag by c, c'. The blank may be formed of heavy paper board or any other suitable cheap material, in case a cheap bag is to be made, and of leather, in case a more expensive bag is required. For my present purpose I utilize heavy paper board for the blank and cover it, while still in the form of the blank, with a thin layer of cloth,

paper, or other other suitable lining, and on the opposite side with a layer of thin leather.

In forming the bag, the ends a, a' may be first turned up into planes at right angles to the bottom A, the sides B, B' may be then raised into position at right angles to the bottom A, then the end pieces C, C' and c, c' may be turned at right angles to the sides to bring their free edges together outside of the end pieces a, a' and the flaps b, b' folded over to form a cover or top. The exterior coating of the leather is preferably applied after the blank which forms the body of the bag is folded into form, the leather serving to close the joint between the end pieces C, C' and c, c'. The side edges of the ends a, a' may be secured to the end flaps C, C' and c, c' at the points where they fold at an angle to the sides B, B' by means of additional strips of lining glued thereto, or their edges might be stitched to the corners of the bag proper in any well known or approved manner to prevent the ends a, a' from falling out of position when utilized as the inner walls of pockets. After the application of the exterior layer of leather, the frame pieces D, D' may be secured to the free edges and ends of the flaps b, b', either by strong stitching or by riveting—as may be found expedient. The frame pieces D, D' are constructed to close, the one under the other, as is common, and may be provided with a catch of any well known or approved form to hold them in closed position.

The end pieces a, a', which are extended up within the bag, may have their edges secured to the corners of the bag, thereby forming the interior walls of pockets at the ends of the bag, the exterior walls of the pockets being formed of the end pieces C, C' and c, c'.

What I claim is—

1. A hand bag, satchel, valise or the like having the body of its bottom, sides and ends formed of a single piece of material, the bottom being one continuous undivided piece, the sides being formed to turn up at right angles from the edges of the bottom, the ends being formed by extended flaps or wings at the opposite ends of the sides and the bottom being further provided with extended end portions adapted to turn up at right angles to the bottom and occupy a position, when so

turned, within the ends formed by the extended flaps on the sides and the sides being further provided with extended portions at their free edges, substantially as set forth.

5 2. The combination with folding flaps connected with the sides to swing toward and away from each other to form a closure for the bag, of frame pieces independent of each other and each extending across the free edge

10 and ends of a flap, said frame pieces having

their ends disconnected from the ends of the other and secured to the ends of the folding flaps in proximity to the corners of the sides of the bag and depending solely upon the flaps for their support, substantially as set forth.

MAX LOWY.

Witnesses:

FREDK. HAYNES,
IRENE B. DECKER.