

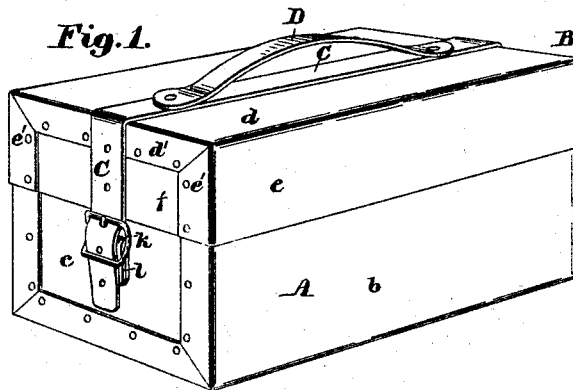
(No Model.)

E. HASKELL.  
LUNCH BOX.

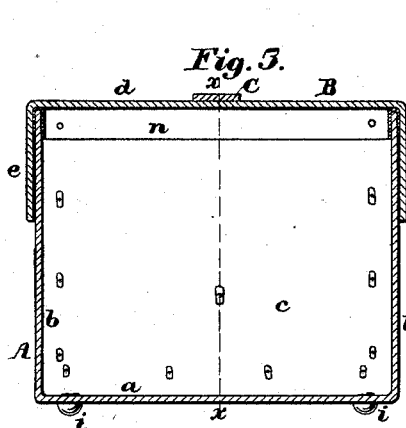
No. 524,499.

Patented Aug. 14, 1894.

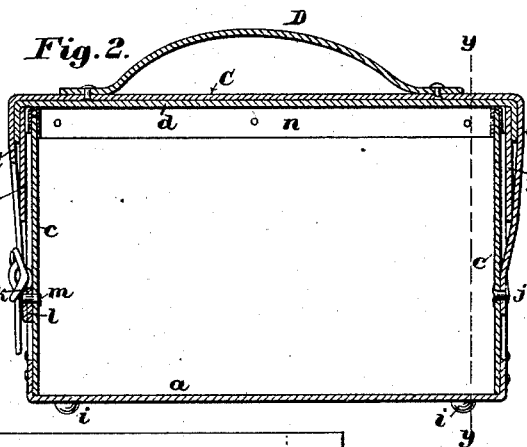
*Fig. 1.*



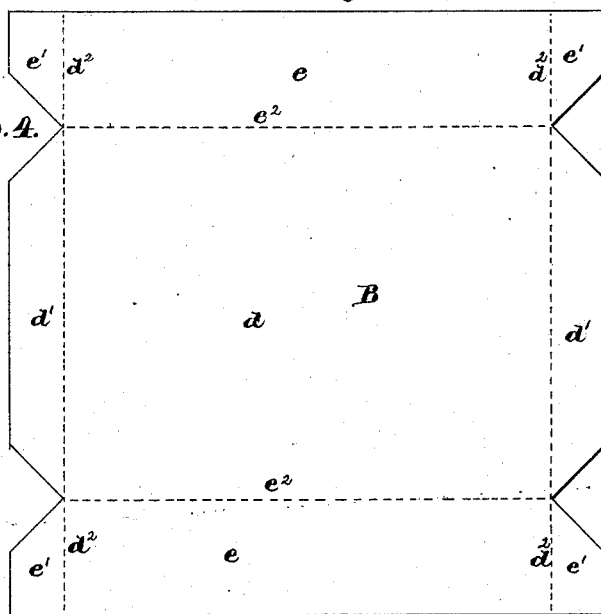
*Fig. 3.*



*Fig. 2.*



*Fig. 4.*



Witnesses:

Walter E. Lombard.  
Geo A. Sewall

Inventor:

Ezra Haskell,  
by N. P. Lombard  
Attorney.

# UNITED STATES PATENT OFFICE.

EZRA HASKELL, OF KENNEBUNK, MAINE.

## LUNCH-BOX.

SPECIFICATION forming part of Letters Patent No. 524,499, dated August 14, 1894.

Application filed February 16, 1893. Serial No. 462,571. (No model.)

*To all whom it may concern:*

Be it known that I, EZRA HASKELL, of Kennebunk, in the county of York and State of Maine, have invented certain new and useful

5 Improvements in Lunch-Boxes, of which the following, taken in connection with the accompanying drawings, is a specification.

My invention relates to lunch boxes and it consists in certain novel features of construction, arrangement and combination of parts which will be readily understood by reference

10 to the description of the drawings and to the claims hereinafter contained and in which my invention is clearly pointed out.  
15 Figure 1 of the drawings is a perspective view of a lunch box embodying my invention. Fig. 2 is a central, vertical and longitudinal section of the same, on line *x x* on Fig. 3. Fig. 3 is a vertical transverse section on line *y, y*, on

20 Fig. 2 looking toward the right of said figure, and Fig. 4 is a plan of the piece of material from which the main body of the cover is to be formed by folding or bending certain parts thereof at right angles to the main or central

25 portion.  
In the drawings A is the main body of the box made of the bottom *a* and sides *b b* made in one piece, and the ends *c c*.  
30 B is the cover composed of the top *d*, sides *e e* and ends *f, f*, said top and sides being formed from a single piece of material made from flax tow which is known as "fabricated leather" said top being provided at its ends with the extensions *d' d'* which are folded or

35 bent at right angles to said top, and the sides *e e* have similar extensions *e' e'* which are bent at right angles to said sides the bends of said extensions being all on the dotted lines *d<sup>2</sup>, d<sup>2</sup>*, and the sides *e* are also bent at right angles to the top *d* along the dotted lines *e<sup>2</sup> e<sup>2</sup>* and then the extensions *d'* and *e'* are secured to the ends *c c* by riveting as shown in Fig. 1.  
40 The body of the box is cut from the same material and of the same form as the cover except that the sides are wider than the sides of the cover, and said sides *b b* and the extensions thereof and the extensions at the ends of the bottom *a* are bent at right angles to the parts to which they are attached as described

50 in connection with the cover and said extensions are secured to the end plates *c c* by riveting as shown in Figs. 1, 2, and 3.

The bottom *a* has set therein four rivets having large nearly hemispherical heads *i i* to prevent the bottom being subjected to unnecessary wear. 55

C is a leather strap secured permanently by one end to one end plate of the box by a rivet *j*, and extending upward and longitudinally over the top of the cover, is attached at its 60 other end to the buckle *k*, which is connected by the leather loop *l* and the rivet *m* to the opposite end plate *c* of the body of the box, all as shown in Figs. 1, and 2.

The strap C has secured thereto the handle 65 D as a convenient means of carrying the box.

It will be seen that neither the box nor cover has any seams or joints at its corners but instead all the corners are smooth and slightly rounded so as to present a very neat appearance and both the inside and outside of the 70 box and cover present smooth water proof surfaces so that the box can be washed without injury.

The upper edge of the box proper is reinforced by a binding *n* of thin sheet steel folded over the upper edge of the box and secured thereto by rivets as shown in Figs. 2, and 3. This makes a very strong and durable box, 80 that presents a neat and tasty appearance, and that is produced at a comparatively small cost.

What I claim as new, and desire to secure by Letters Patent of the United States, is—

1. A lunch box the body and cover of which 85 are telescopically fitted one within the other, made from sheets of material cut to the outline and provided with scores as shown presenting no seams or exterior joints at the corners, and the several parts of each section 90 being secured together in combination with a leather strap permanently secured by one end to one end of the box body, and secured at the other end to a buckle permanently attached to the opposite end of the box body 95 and a handle secured to said strip substantially as described.

2. A lunch box the body and cover of which 100 are telescopically fitted one inside the other made from sheets of smooth, waterproofed fabricated leather material, cut to the outline and provided with scores as shown, presenting no seams or exterior joints at the corners, and the several parts of each section being se-

cured together in combination with a leather strap permanently secured by one end to one end of the box body, and secured at the other end to a buckle permanently attached to the  
5 opposite end of the box body and a handle secured to said strap substantially as described.

3. A lunch box the body and cover of which are telescopically fitted one into the other made from sheets of material cut to the outline and provided with scores as shown presenting no seams or exterior joints at the corners and the several parts of each section being secured together by riveting, said body  
10 being provided with a binding of thin steel folded over its upper edge and secured

thereto, in combination with a leather strap, permanently secured by one end to one end of the box body, and secured at the other end to a buckle permanently attached to the opposite end of the box body and a handle secured to said strap, substantially as described. 20

In testimony whereof I have signed my name to this specification, in the presence of two subscribing witnesses, on this 15th day of February, A. D. 1893.

EZRA HASKELL.

Witnesses:

N. C. LOMBARD,  
WALTER E. LOMBARD.