

2 Sheets—Sheet 1.

No. 525,509.

Patented Sept. 4, 1894.

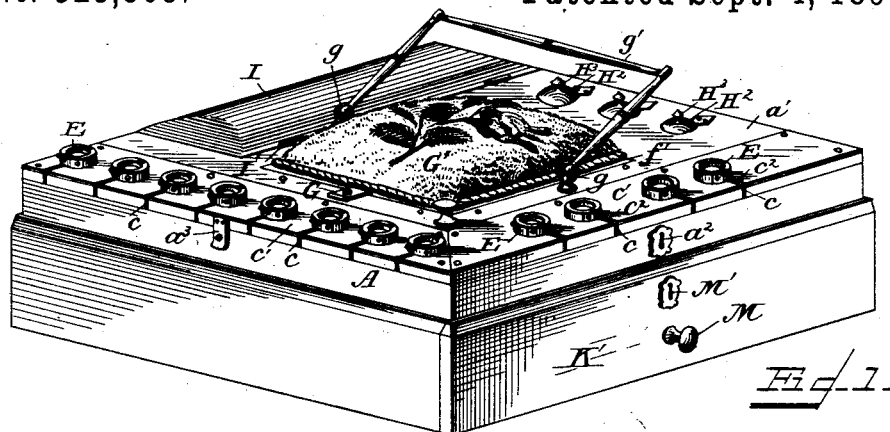
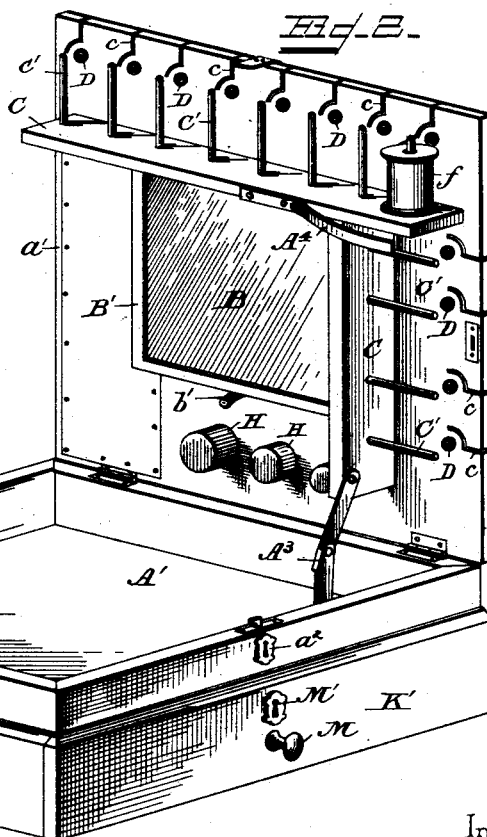
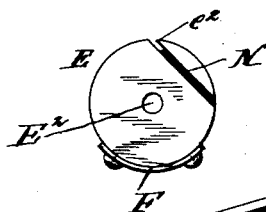
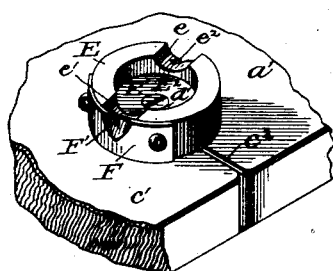


Fig 4



Inventor

Sarah Flora B. O'Leary

Witnesses

Chas N Curand

J. R. Owens,

By her Attorneys.

Chas. Snow & Co

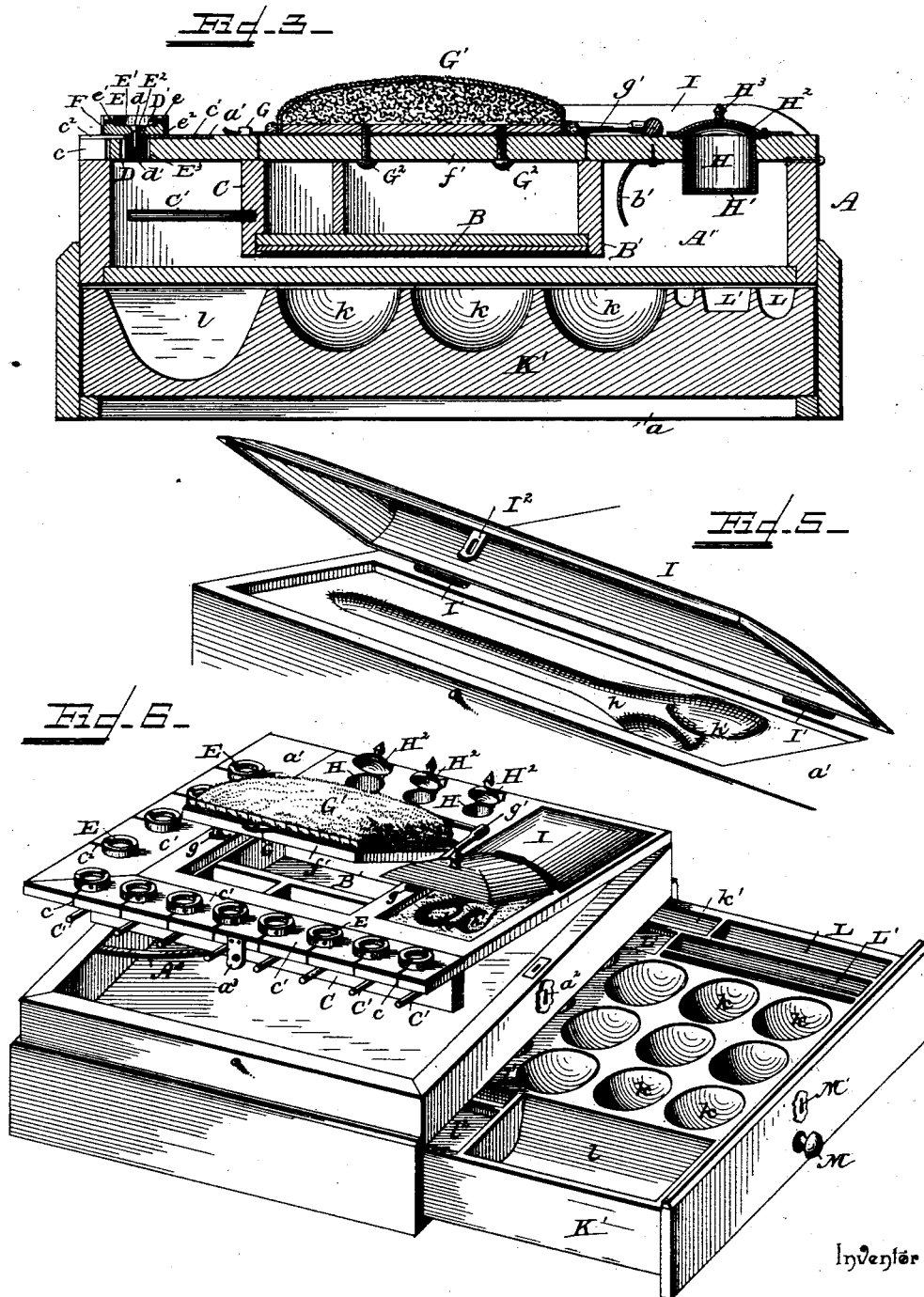
(No Model.)

2 Sheets—Sheet 2.

S. F. B. O'LEARY.
WORK BOX.

No. 525,509.

Patented Sept. 4, 1894.



Witnesses

Chas. H. Curand
J. B. Owens

By her Attorney, Sarah Flora B. O'Leary

Chas. H. Curand

UNITED STATES PATENT OFFICE.

SARAH FLORA BELLE O'LEARY, OF WAVERLY, KANSAS.

WORK-BOX.

SPECIFICATION forming part of Letters Patent No. 525,509, dated September 4, 1894.

Application filed March 28, 1894. Serial No. 505,495. (No model.)

To all whom it may concern:

Be it known that I, SARAH FLORA BELLE O'LEARY, a citizen of the United States, residing at Waverly, in the county of Coffey and State of Kansas, have invented a new and useful Work-Box, of which the following is a specification.

My invention relates to an improvement in boxes adapted to contain ladies' articles; and my principal object is to provide a combined work and toilet box and to so construct the device that it will be more simple and durable than any heretofore known, and at the same time one which will be convenient, to the user.

To these ends my invention consists of certain improved features of construction and arrangement of parts, all of which will be fully described hereinafter and finally embodied in the claims.

In the accompanying drawings, Figure 1 represents a perspective view of a workbox constructed after my invention. Fig. 2 is a view of the invention showing the main lid raised. Fig. 3 is a section. Fig. 4 is a detail view of the cotton cutting devices. Fig. 5 is a detail of one form of the scissor-bed. Fig. 6 is a perspective of the device shown with its attachments open. Fig. 7 is a bottom plan view of the thread-cutting device.

The device consists of a body portion A, square in shape and provided with the compartment A', and drawer space a. Hinged to the top side of the body and arranged to close the compartment A, is the lid a', which is provided with a lock a² and a catch a³, by which it may be secured over the compartment. A jointed brace A³, is provided for the lid a', by which it may be held open and a spring A⁴, which aids in opening or raising the lid. The compartment A', is adapted to contain the toilet articles, and to comprise a portable toilet set. Secured to the under side of the lid a', is the mirror B, which is extended out from the bottom by reason of the position of the box B'.

b, and b', indicate two clasps which are adapted to hold a tooth or nail brush, and these may be increased at will or their positions varied, since this is immaterial to the invention. This compartment may be provided with various other devices which will

readily suggest themselves to persons skilled in the art.

Secured to the under side of the lid a', and extending at right angles to each other and parallel with the sides of the lid are the two strips or cleats C, each of which forms one side of the box B', and are also adapted to form a support for the spool spindles C'. These latter devices may be of any desired number, preferably twelve, and consist of metallic rods projecting laterally toward the sides of the box. Formed in the edges of the lid a' and directly above the spindles C', are the slots c. These slots are one for each spindle and formed with a straight portion communicating with the edge of the lid and extending inwardly for about half an inch, at which point they curve to form substantially a quadrant. Secured to the edges of the lid a' that are above the spindles C', are two metallic plates c', which have slots c², formed in their edges, and these slots are of the same shape as the slots c.

D, indicates a series of openings which are formed at the center of the quadrant part of the slots c, and are matched by the openings D', formed above them and in the plates c'. Through these openings the bolts or screws d, pass and are secured by the nuts d', which are arranged in the openings D. The screws d, are adapted to hold the thread cutting devices E, in place, and these consist of circular knobs formed with central depressions E', and openings E², therein, through which openings the screws d, pass. This revolvably secures the knobs in place and rubber pads E³, are placed between the plate c', and nuts d', whereby even tension is secured. Formed in the raised edges of the knobs E, and directly opposite each other are the notches e, and e'. Notch e, is provided with a slot e², which extends downwardly to the lower side of the device and is adapted to communicate, when the knob is turned properly, with the curved portion of slots c.

Secured to the side of the knobs E, directly adjacent to the notches e', are plates F, which lie flush with the curved sides of the knobs and which have the vertical cuts F', formed in their upper ends and directly opposite the notch e'. These cuts or slots are just wide enough at their upper ends to easily admit

the thread from the spools on spindles C', and taper down to a very fine space at their lower ends, the sides being formed sharp and capable of cutting the thread when brought thereagainst.

f, indicates the spools of thread which are revolvably and removably mounted upon the spindles C', and have their thread passed through the slots c, and thence up through the slots c², across the knobs E, and over the cuts or slots F', in the plates F. Thus it will be seen that the thread may be drawn out as far as desired and then quickly parted by bringing it in engagement with the knife plate F. The end of the slot c, may be used to pass the thread through so that it may be brought into engagement with the plate F, at a more acute angle, thus expediting the cutting.

In the under side of the thread cutting device E, and just to the left of the slot e², is a short groove N. When the device E is set with its vertical cut F', directly over the straight portion of the slot c, this groove in the thread cutting device E, is just long enough to connect the slot e², with the end of the slot c. This allows the cotton to move freely, and horizontally between the device E and the metallic plate c', and prevents the end of the thread from dropping back into the compartment A', while in use.

The box B', is covered by the lid f', and this is provided with a lock or catch G, by which it may be raised. Secured to the top of this lid f' is a pin cushion G', which is retained by means of screws G², thus admitting its substitution by a new one when worn out. Fixed to the lid a', opposite each other and on each side of the lid f', are the bifurcated studs g, to which is pivotally connected the handle g'. By this means the device may be carried and the parts are so arranged that the box will be easily balanced when lifted by this means. I have provided thimble beds or receptacles H, and these are preferably three in number and arranged near the back edge of the box. These devices consist of the cylindrical cups H', provided with lids H², which are hinged to the lid a', by hinges arranged adjacent to the back edge of said latter lid. Knobs or buttons H³, are provided and affixed to the lids H², by which they may be raised.

Fig. 5 illustrates the bed or receptacle for holding scissors and this consists of a depression h, shaped after the manner of a pair of scissors and provided with a deeper depression h', at the handles whereby these devices may be easily grasped. I, indicates a lid which is hinged at I', and provided with a catch I², by which the scissors may be covered. Formed in the body A, below the compartment A', and occupying all the space there-beneath, is the drawer-space a, which is adapted for the reception of the drawer K'. The drawer K', is preferably formed of a solid block of wood, though it may be otherwise

constructed if so desired, and has formed in it a series of compartments, adapted for the reception of various sewing articles. Thus, I have provided fifteen button bowls or receptacles k, in which buttons may be conveniently placed. Darning needles may be placed in the compartment k', chalk in the compartment L, while various articles such as button hooks, lead pencils, knitting needles, &c., may be arranged in the compartments L'. A larger opening l, is provided for embroidery floss and l' and l², may be used for button-hole cutters and knives.

M, indicates a button by which the drawer may be withdrawn and M' a catch or lock for holding the drawer in place. Within the box B', a number of compartments are formed in which various articles, such as needles, pins, tape lines, &c., may be conveniently placed.

From the foregoing it will be seen that my invention is extremely convenient and that by its means a lady's sewing articles may be kept handy and within easy reach. It is also simple in construction and attractive in appearance, while by means of the toilet set one may arrange the toilet while at work and without having to go to their chamber.

In Figs. 1 and 5 I have shown the lid of the scissor bed formed of one piece and hinged at the inner side. This is not however, the preferred form, and Fig. 6 illustrates the manner of constructing the lid which I regard as best adapted to the purpose for which the receptacle is used. There, the lid is shown as formed of the transverse sections, one of which is secured over the bed, while the other is hinged to the front end of its companion and provided with a knob or button by which it may be raised.

By means of the thread cutting device the cotton may be quickly drawn out and severed from the spools leaving an inch in length above the device for a finger hold. Turning the device a little farther to the right than when in use tightens the thread firmly leaving an inch of it above the device to show color and size. Lids of scissors and thimble beds are attached by strong spring hinges which close them firmly over their openings. These spring hinges, in conjunction with the shape and arrangement of the parts, fix all articles which may be placed therein, so firmly in their compartments that they cannot be shifted or removed from their place though the box be rolled over and over. Therefore it will be seen that the use of the thread cutting devices is in exhibiting the color and size of the cotton, and in severing, loosening and tightening it.

While I have shown my invention embodied in a square box, it will be understood that it is not necessarily so shaped, and that I could employ various, indeed all, other shapes; and in practice I contemplate varying their shape to suit the fancies and conveniences of the trade.

Having thus described the invention, what is claimed, and desired to be secured by Letters Patent, is—

1. A work box comprising in its construction a body portion provided with a swinging lid, a cleat fixed to the under side of said lid, a spindle fixed to the cleat and projecting parallel with the lid, the said lid having formed therein and adjacent to the spindle a slot having a straight portion communicating with a curved or segmental portion, and a thread-cutting device pivotally mounted upon the outer side of the lid, the spindle being adapted for the reception of a spool of thread, substantially as described.

2. A thread-cutting device comprising in its construction a plate or base board having

formed in its edge a slot consisting of a straight portion communicating with a curved or segmental portion, and a cup-shaped knob pivotally secured to the plate or base board with its axis concentric with the segmental portion of said slot, said knob having formed in its sides two oppositely-located notches, and a notched thread-cutting blade secured to the knob and directly adjacent to one of the notches therein, substantially as described.

In testimony that I claim the foregoing as my own I have hereto affixed my signature in the presence of two witnesses.

SARAH FLORA BELLE O'LEARY.

Witnesses:

R. G. WHITE,
C. L. FOSTER.