

No. 646,088.

Patented Mar. 27, 1900.

G. J. CHAFFEE.  
APPARATUS FOR CONCEALING GRAVES.

(No Model.)

(Application filed Aug. 11, 1899.)

Fig. 2

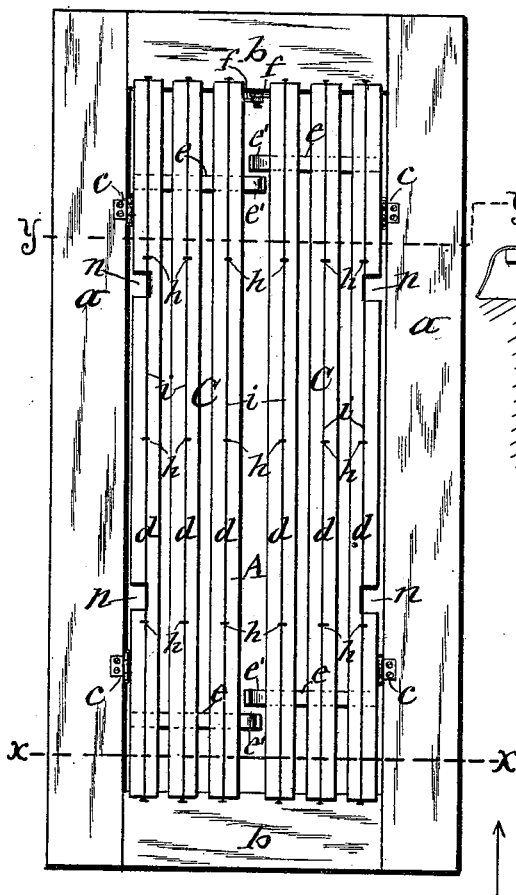


Fig. 1

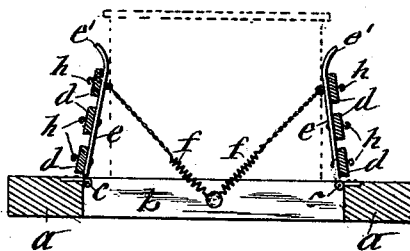
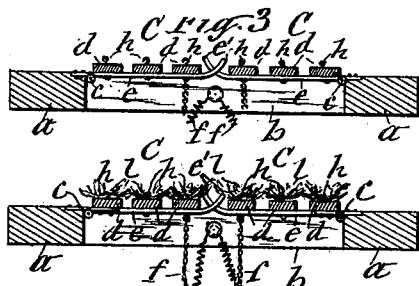
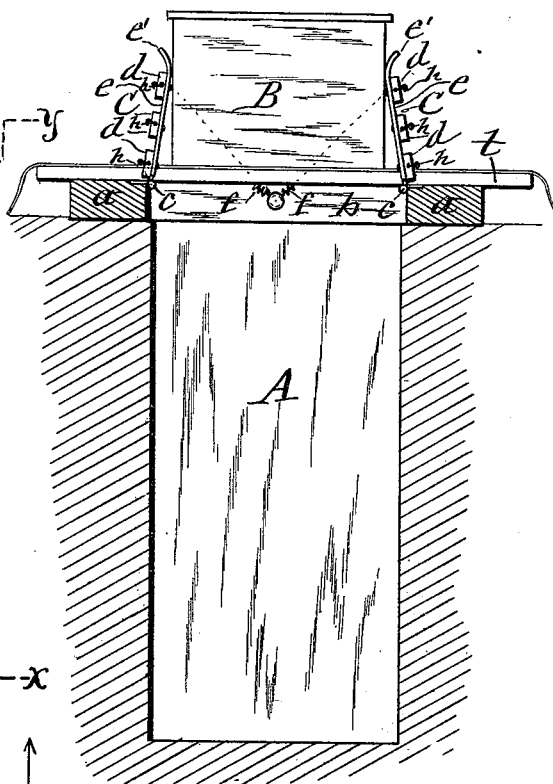


Fig. 5

WITNESSES:

H. D. Smith.

J. J. Luss.

Fig. 4

INVENTOR

Guy J. Chaffee

By E. Luss.

ATTORNEY

# UNITED STATES PATENT OFFICE.

GUY J. CHAFFEE, OF SYRACUSE, NEW YORK.

## APPARATUS FOR CONCEALING GRAVES.

SPECIFICATION forming part of Letters Patent No. 646,088, dated March 27, 1900.

Application filed August 11, 1899. Serial No. 726,859. (No model.)

*To all whom it may concern:*

Be it known that I, GUY J. CHAFFEE, a citizen of the United States, and a resident of Syracuse, in the county of Onondaga, in the State of New York, have invented new and useful Improvements in Apparatus for Concealing Graves, of which the following, taken in connection with the accompanying drawings, is a full, clear, and exact description.

This invention relates to devices employed to conceal to a great extent the grave and the casket or box containing the casket during the burial of the corpse, and thus relieve the mourners from one of the saddest sights during burial.

The object of the invention is to provide a grave-concealing apparatus which shall be simple in construction, operative automatically and independently of the devices employed for lowering the casket into the grave, and shall also obviate the necessity of excavating the grave wider than is usually required to admit the box in which the casket is deposited, which latter feature is specially important in places where the grave is to be made in proximity to another grave.

To attain said object, the invention consists chiefly in the combination of longitudinal brink-sills, lid-sections connected to said sills movably from a standing position to a horizontal meeting position, means for limiting the movement of said lid-sections below said meeting position, and means for securing a concealing-cover to the outer surfaces of said lid-sections; and the invention also consists in novel features of its detail construction and auxiliary devices connected therewith, as hereinafter described, and set forth in the claims.

In the annexed drawings, Figure 1 is an end view of my invention placed in position to allow the casket to be lowered into the grave and to conceal the grave and automatically close the mouth of the grave during the descent of the casket. Fig. 2 is a plan view of my invention shown closed over the grave. Figs. 3 and 4 are transverse sections on lines X X and Y Y in Fig. 2 and showing, respectively, the bare structure and ornamentation of the lid-sections; and Fig. 5 is a transverse section of my invention in its open position.

Similar letters of reference indicate corresponding parts.

*a a* represent two sills placed longitudinally upon the brink of the grave and held in place by cross-bars *b b*, placed between them at the ends of the grave A. To the inner top edge of each of the sills *a a* is hinged a lid-section C, as shown at *c*, which lid-section is movable from a standing position, as shown in Fig. 1, to a horizontal position over the grave A, to which latter position the movement of the lid-section is limited by the ends thereof resting upon the cross-bars *b b*, as shown in Fig. 2 of the drawings, and when in said position the two lid-sections meet centrally over the grave. Although I do not limit myself to any special construction of said lid-sections, yet I prefer to form them of longitudinal slats *d d*, fastened to the tops of transverse bars *e e*, preferably of steel or iron. The free ends of the bars *e e* I bend or curve outward, as shown at *e'*, for the purpose hereinafter explained.

*ff* denote springs which are each connected at one end to the inner side of one of the cross-bars *b* at the center of its length. The opposite ends of said springs are each connected to one of the lid-sections, adjacent to the meeting edges thereof, said springs serving to insure the automatic closing of the lid-sections.

Upon the outer faces of the slats *d d* I place wires or suitable straps *i i*, extending lengthwise of the slats and secured thereto by hooks *h h* or other suitable fastening devices. The purpose of said wires or straps is to secure to the exterior of the lid-sections suitable ornamental coverings, such as evergreens or other plants or flowers, as indicated at *l l* in Fig. 4 of the drawings, said ornamentations being held in position by means of the wires or straps *i i* and serving to conceal the lid-sections when in their closed position over the grave.

The operation of my invention is as follows: Before the arrival of the funeral at the cemetery my invention is placed in position for use by placing the brink-sills *a a* upon the surface along the sides of the grave and interposing the cross-bars *b b* at the ends of the grave to properly sustain the brink-sills in position. The lid-sections C, which are con-

5 nected to said sills and rest upon the cross-  
 bars *bb*, are then swung up to allow the usual  
 bars *tt* to be passed through notches *nn* on  
 the hinged edges of the lid-sections and to be  
 placed with their ends upon the brink-sills *aa*  
 to support upon said bars *tt* the casket or the  
 box *B* containing the casket. In placing said  
 casket or box upon the bars *tt* the lid-sections  
*CC* are to be swung outward sufficient to al-  
 10 low the casket or box to be introduced be-  
 tween them and placed in proper position over  
 the grave, and then the lid-sections *CC* are  
 allowed to rest, with the free ends of the trans-  
 verse bars *ee* against the sides of the casket  
 15 or box, as represented in Fig. 1 of the draw-  
 ings. In the operation of lowering the casket  
 or box into the grave the bars *tt* are with-  
 drawn from under the casket or box, which  
 is then lowered into the grave either by straps  
 20 manipulated by persons in charge or by any  
 suitable appliances. In the descent of the  
 casket or box the lid-sections *CC* are drawn  
 into closed position by the springs *ff*, and  
 when closed said lid-sections rest upon the  
 25 stationary cross-bars *bb*, by which they are  
 supported in horizontal position.

I do not limit myself to the use of the afore-  
 said springs, inasmuch as the lid-sections will  
 in many cases close automatically by gravity.

30 In some instances the box *B* has the edges  
 of its lid projecting at the sides of the box,  
 as shown in Fig. 1 of the drawings. For this  
 reason I form the free ends of the bars *ee*  
 with the outward bends *e'* to allow the pro-  
 35 jecting edges of the lid of the box to enter  
 between said bends and pry the two lid-sec-  
 tions asunder, so as to allow the box to de-  
 scend.

What I claim as my invention is—

40 1. A grave-concealing apparatus consisting  
 of brink-sills, lid-sections connected to said  
 sills movably from a standing position to a  
 meeting position over the grave, means for

limiting the movement of said lid-sections be-  
 low said meeting position, and means for se- 45  
 curing a concealing-cover to the outer sur-  
 faces of the lid-sections.

2. The improved grave-concealing appara-  
 tus consisting of brink-sills, lid-sections  
 hinged to the inner top edges of said sills, 50  
 stationary bars supporting said lid-sections  
 in horizontal position and springs drawing  
 the lid-sections into horizontal position as set  
 forth.

3. In combination with brink-sills, lid-sec- 55  
 tions hinged to said sills and composed of lon-  
 gitudinal slats and transverse bars secured  
 to said slats, means for securing ornamenta-  
 tion to said slats, and stationary bars dis-  
 posed under the ends of the lid-sections and 60  
 supporting the same in horizontal position as  
 set forth.

4. In combination with brink-sills, lid-sec-  
 tions hinged to the inner top edges of said  
 sills and provided in their hinged edges with 65  
 notches for the insertion of the casket-sup-  
 porting bars as set forth.

5. In combination with brink-sills, lid-sec-  
 tions hinged to said sills and composed of lon-  
 gitudinal slats and transverse bars secured to 70  
 said slats, and wires extending lengthwise of  
 the tops of the slats and fastened thereto as  
 and for the purpose set forth.

6. In combination with brink-sills, lid-sec- 75  
 tions hinged to said sills and composed of lon-  
 gitudinal slats fastened to transverse bars  
 having the free ends curved outward to re-  
 ceive between them the projecting top of the  
 casket or box, springs drawing the lid-sec-  
 tions into closed position, and stationary bars 80  
 supporting the lid-sections horizontally in  
 their closed position as set forth.

GUY J. CHAFFEE. [L. S.]

Witnesses:

J. J. LAASS,  
 H. B. SMITH.