

No. 646,115.

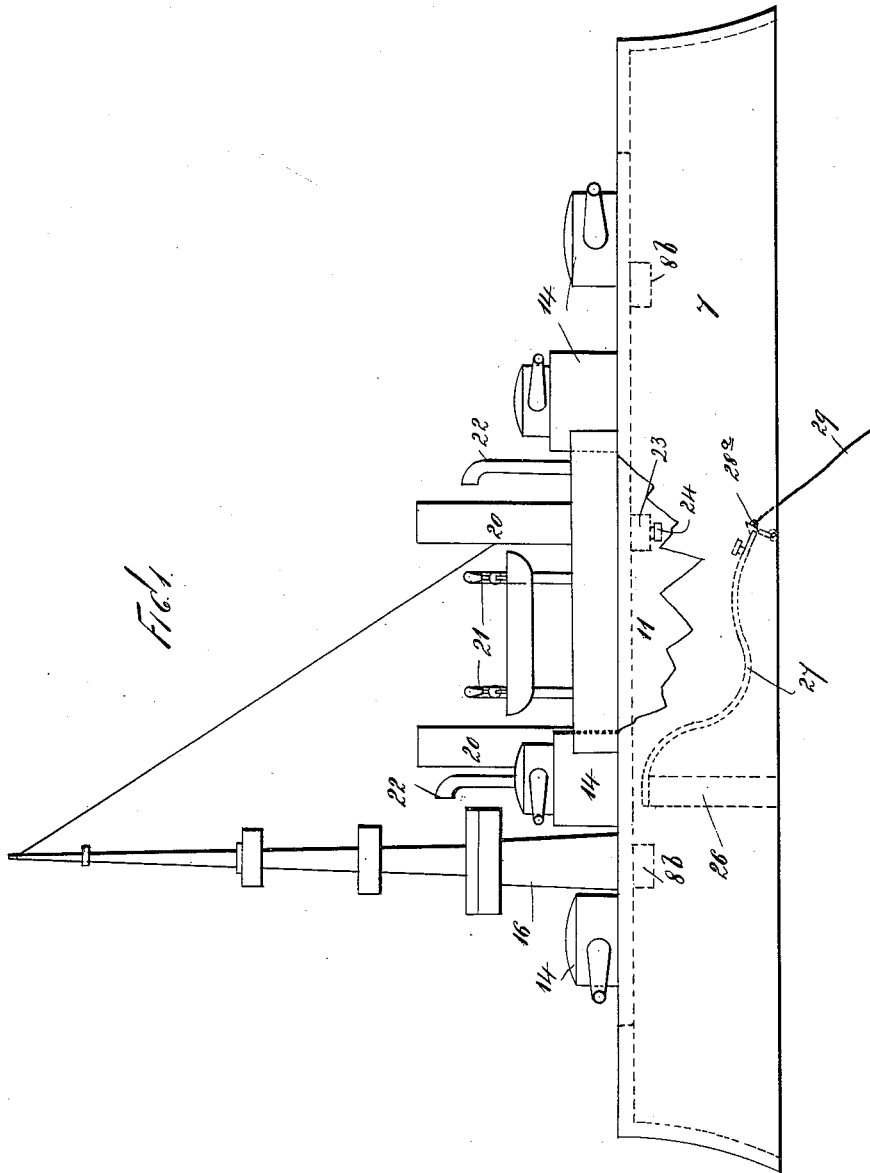
C. M. A. WICHMANN.
TOY.

Patented Mar. 27, 1900.

(Application filed Sept. 2, 1899.)

(No Model.)

2 Sheets—Sheet 1.



WITNESSES
Wm. Buckler,
F. A. Stewart

INVENTOR
Charles M. A. Wichmann
BY
Edgar Patch
ATTORNEYS

UNITED STATES PATENT OFFICE.

CHARLES MARTIN ANDREW WICHMANN, OF JACKSONVILLE, FLORIDA.

TOY.

SPECIFICATION forming part of Letters Patent No. 646,115, dated March 27, 1900.

Application filed September 2, 1899. Serial No. 729,296. (No model.)

To all whom it may concern:

Be it known that I, CHARLES MARTIN ANDREW WICHMANN, a citizen of the United States, residing at Jacksonville, in the county of Duval and State of Florida, have invented certain new and useful Improvements in Toys, of which the following is a full and complete specification, such as will enable those skilled in the art to which it appertains to make and use the same.

This invention relates to toys; and the object thereof is to provide an improved device of this class which is intended to represent a battle-ship and the explosion thereof.

The invention is fully disclosed in the following specification, of which the accompanying drawings form a part, in which—

Figure 1 is a side view of my improved toy with all the parts assembled; Fig. 2, a side view of the central deck portion detached; Fig. 2^a, a similar view showing a portion of the hull of the ship detached and attached to a detached deck-beam; Fig. 3, a side view of the hull of the ship with the central deck portion detached; Fig. 4, a plan view of the hull of the ship with the central deck portion in position and showing the place where in practice the turrets, mast, and other parts are assembled; and Fig. 5, a view of the parts which make up the mainmast, said parts being detached.

In the drawings forming part of this specification the separate parts of my improvement are designated by the same numerals of reference in each of the views, and in said drawings I have shown at 7 the hull of a ship provided with a detachable central deck portion 8, which consists of a plurality of longitudinally-arranged strips 8^a, supported upon the deck-beams 8^b, the end two of which latter are rigidly secured to said hull 7 and the intermediate one of which is secured to the deck portions 11, and said hull is provided with stationary end deck portions 9, and the division between the stationary end deck portions 9 and the central detachable deck portion 8 is made by broken lines 10.

The central detachable deck portion 8 is provided centrally thereof with downwardly-directed side portions 11, which form a part of the sides of the hull and which are adapted to be connected therewith when the cen-

tral detachable deck portion 8 is in position, and the division between the parts 11 of the sides of the hull and the said sides of the hull is made by broken lines 12. When the central detachable portion 8 of the deck is in position, the sides of the hull 7 are complete, and I also place or form on the central detachable portion 8 of the deck spaces 13, which represent points where turrets are placed and on which when the parts are assembled the turrets 14 are placed, as shown in Fig. 1. The central detachable deck portion 8 is also provided at 15 with a space where the mainmast 16 is placed and another spaces 17, where the smoke-stacks are placed, and with spaces 18, where the davits are placed, and with spaces 19, where ventilators are placed.

It will be understood that all the above-named parts—the turrets, the mainmast, the smoke-stacks, the davits, and the ventilators and ventilator-pipes—are made detachable and are simply set onto the deck when the central detachable portion 8 of the deck is in position, and in Fig. 4 the turrets are represented by the reference-numeral 14, the mainmast by the reference-numeral 16, the smoke-stacks by the reference-numeral 20, the davits by the reference-numeral 21, and the ventilators by the reference-numeral 22.

The mainmast 16 is composed of separate detachable sections, as shown in Fig. 5, and these parts may be connected in any desired manner and are preferably simply set one upon another in the order shown, and the central detachable deck portion 8 is provided centrally of the bottom thereof with a casing 23, provided with a downwardly-directed percussion-cap holder 24, and secured in the hull 7, at any suitable point, as 25, is a support 26, to which is secured a strong spring 27, the free end of which is provided with a hammer 28, and in practice this spring is depressed and the free end thereof connected with a pivoted catch 28^a, which holds said free end of said spring in a depressed position, as clearly shown in Fig. 1, and connected with said catch is a cord 29.

When the parts have all been assembled, as shown in Fig. 1, all that is necessary in order to cause an explosion or the representation thereof is to pull on the cord 29. This releases the spring 27, which flies upwardly,

and the hammer 28 strikes the cap 24 and an explosion is produced which lifts the detachable back portion 8 and tumbles all the deck-fixtures thereon in various directions, as will be readily understood. The spring 27 may be made strong enough to assist in raising the detachable deck portion 8, and the explosive charge in the receptacle 23 may also, as will be understood, be made of any desired strength.

The entire apparatus is simple in construction and operation and perfectly adapted to accomplish the result for which it is intended, and it will be apparent that changes in and modifications of the construction described may be made without departing from the spirit of my invention or sacrificing its advantages.

Having fully described my invention, I claim as new and desire to secure by Letters Patent—

1. A toy of the class described, which represents a battle-ship provided with a central detachable deck portion on which the turrets, masts, davits, and other deck-fixtures are loosely placed, and means upon and beneath said detachable deck portion for causing the representation of an explosion and the lifting of said detachable deck portion, substantially as shown and described.

2. A toy of the class described made to represent a battle-ship provided with a detachable deck portion on which all the deck-fixtures are loosely placed, said central detachable deck portion being provided on the under side with a receptacle in which explosive material is placed, and a percussion-cap holder, and said hull being provided with a strong spring which is secured therein, and

one end of which is free and adapted to be depressed and when released to explode said cap, substantially as shown and described.

3. A toy adapted to represent a battle-ship, said ship being provided with a central detachable deck portion, on which the deck-fixtures are loosely placed, a portion of the sides of the hull being also formed integrally with said detachable deck portion and means upon and beneath said detachable deck portion and the hull for causing an explosion and the lifting of the said deck portion, substantially as shown and described.

4. A toy adapted to represent a battle-ship, said ship being provided with a central detachable deck portion, on which the deck-fixtures are loosely placed, a portion of the sides of the hull being also formed integrally with said detachable deck portion and means connected with said detachable deck portion and the hull for causing an explosion and the lifting of the said deck portion, consisting of a receptacle secured to the bottom of said deck portion and adapted to receive explosive material and provided with a percussion-cap holder, and a strong spring secured in the hull, the free end of which is adapted to be depressed and when released to strike said cap-holder, substantially as shown and described.

In testimony that I claim the foregoing as my invention I have signed my name, in presence of the subscribing witnesses, this 15th day of August, 1899.

CHARLES MARTIN ANDREW WICHMANN.

Witnesses:

A. O. WRIGHT,
GEO. W. THAMES.