

No. 646,194.

Patented Mar. 27, 1900.

M. E. SIMS.
BED ROBE FOR INVALIDS.
(Application filed Sept. 30, 1899.)

(No Model.)

Fig. 1.

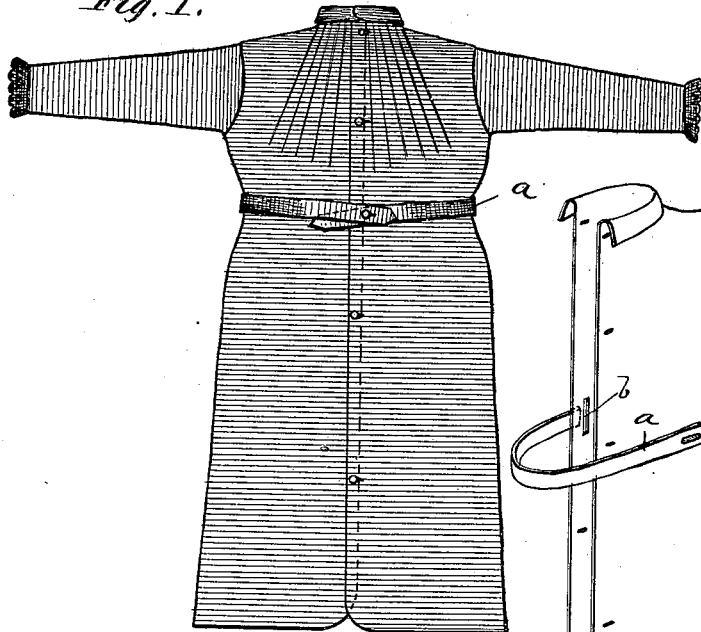


Fig. 3.

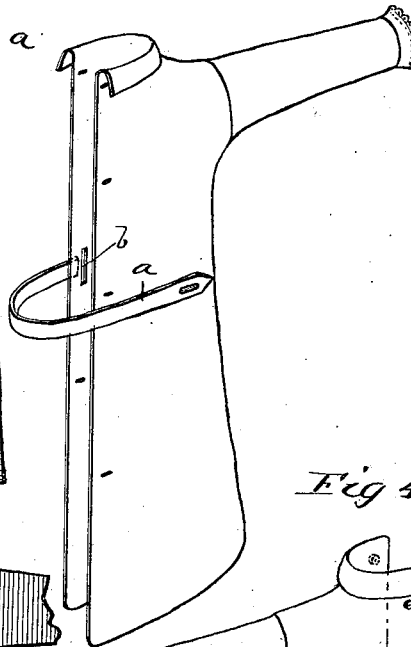


Fig. 2.

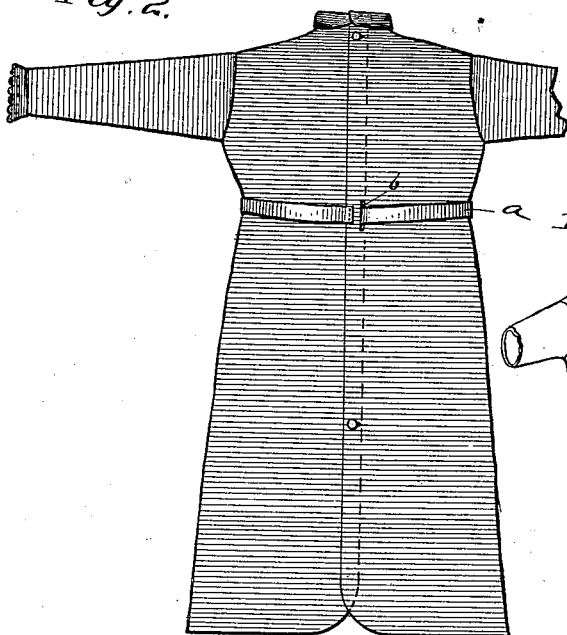
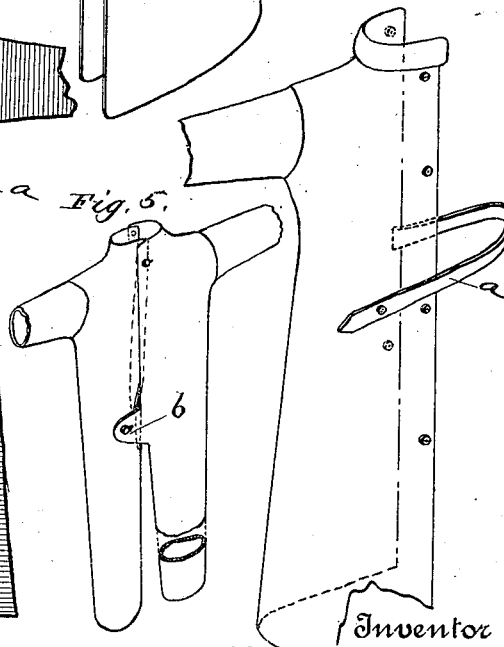


Fig. 4.



Witnesses
C. H. Walmley
Ramsay Williams

Inventor
Mary E. Sims
By David Davis
Attorneys

UNITED STATES PATENT OFFICE.

MARY E. SIMS, OF SAN ANGELO, TEXAS.

BED-ROBE FOR INVALIDS.

SPECIFICATION forming part of Letters Patent No. 646,194, dated March 27, 1900.

Application filed September 30, 1899. Serial No. 732,182. (No model.)

To all whom it may concern:

Be it known that I, MARY E. SIMS, a citizen of the United States, residing at San Angelo, county of Tom Green, State of Texas, have invented certain new and useful Improvements in Bed-Robes for Invalids, of which the following is a specification, reference being had therein to the accompanying drawings, in which—

10 Figure 1 is a front elevation, and Fig. 2 a rear elevation, of my improved gown; Figs. 3 and 4, detail perspective views of the two sections of the gown, and Fig. 5 a reduced perspective of another form of the garment.

15 The object of the invention is to provide a gown that may be readily put on the patient or invalid and removed without disturbing his comfort in the least, the gown being simple in construction and very cheaply made, as more fully hereinafter set forth.

As will be seen from the drawings, my gown consists of an ordinary night robe or shirt split or divided entirely down the front and the back, the line of division in both sides running centrally of the gown—that is, midway between the sleeves. Thus dividing the gown makes it consist of two longitudinal sections, each of which is provided with the usual sleeve. The adjoining edges of the sections overlap and are provided with suitable fastening devices, buttons and buttonholes being preferred. The line of buttons and buttonholes may run the full length of the garment in front; but in the rear I prefer to employ but two buttons, one at the neck and the other at a suitable point below the waist, where it will be readily accessible between the legs of the wearer. A suitable two-part belt *a* may be employed, if desired, in addition to the other fastening devices. One part of the belt is attached to the rear edge of each section, so that the two parts of the belt may be passed around the gown in opposite directions and brought together and fastened at the front, thereby serving to draw and to hold the rear edges of the garment-sections closed between the upper and lower fastening devices connecting the rear edges of the sections. In order that the two belt-sections may lie in alinement, one of the sections is passed through a slot *b* near the point of attachment of the other section.

It will be observed that the use of my gown in illness will contribute greatly to the comfort of the invalid and materially save the nurse from much of the fatigue usually caused by attendance upon invalids wearing the usual night-robos or pajamas. The gown, as is evident, is put on and removed in sections, one section being put on and removed at one side and the other section at the other side. To put on or remove the gown the invalid need not be bodily lifted or turned over or required to sit or stand up. It is simply necessary that he be turned slightly on one side to put on one section and then slightly toward the other side for the other section, as is evident. It will also be observed that should one section become soiled it may be removed and replaced by another section, thus avoiding the necessity of removing the entire garment. It will be noted also that using but the two fastening devices at the back contributes to the utility of the garment, not only because it promotes comfort, but also because it facilitates the putting on and the taking off of the robe, the two rear buttons being readily accessible. It will also be noted that in certain ailments and in assisting the invalid in the performance of certain natural functions it will be very advantageous to have a robe readily separable up the front and also up the back.

As shown in Fig. 5, the skirt portions may be sewed together to form tubular parts to inclose the legs, and in this form a flap *b* may be attached to one of the sections at a point coincident with crotch and be buttoned over upon the adjacent section.

Having thus fully described my invention, what I claim, and desire to secure by Letters Patent, is—

1. A bed-gown having its body portion divided into two longitudinal sections having their edges separably connected together, one line of division running entirely up the front and the other entirely up the back and each section carrying one of the sleeves of the garment, and a belt connected to the garment at the back, its free ends being adapted to be brought to the front and secured, as and for the purposes set forth.

2. A night-robe having its body portion divided longitudinally into two sections, the

lines of division extending from the neckband to the lower end of the garment and one running centrally down the back and the other centrally down the front and each section carrying a sleeve, a row of fastening devices connecting the front edges and two fastening devices connecting the rear edges, one at the neckband and the other below the waist portion, and a belt consisting of two straps, one on each section, as and for the purpose set forth.

3. A bed-gown having its body divided longitudinally into two sections, the lines of division extending from the neckband to the lower end of the garment both down the front and down the back thereof and each section carrying a sleeve, fastening devices detachably connecting the edges of the sections, and a two-part belt, each part having one of its ends attached to one of the sections at the rear edge thereof, whereby the ends of the belt-sections may be brought around the body

in opposite directions and secured together in front.

4. A bed-gown having its body portion divided longitudinally into two sections, the lines of separation extending from the neckband to the lower end of the garment, whereby the sections may be entirely separated and each section will carry one sleeve, fastening devices detachably connecting the front edges of the sections and two fastening devices connecting the rear edges thereof, one of these devices being located at the neckband and the other below the waist portion, and a belt secured to the garment at a point between said rear fastening devices.

In testimony whereof I hereunto affix my signature, in the presence of two witnesses, this 26th day of September, 1899.

MARY E. SIMS.

Witnesses:

NETTIE HOSKINS,
LULA BUSTIN.