

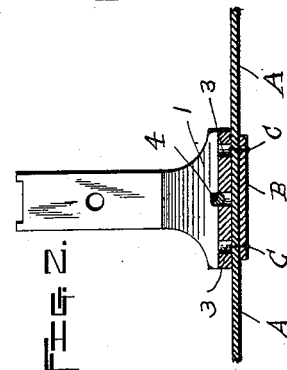
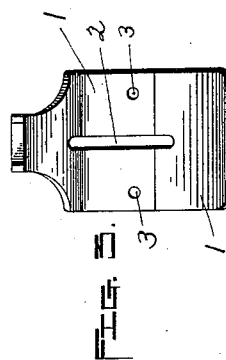
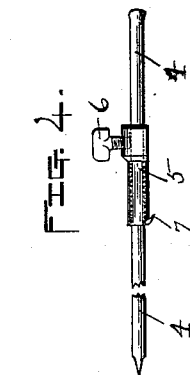
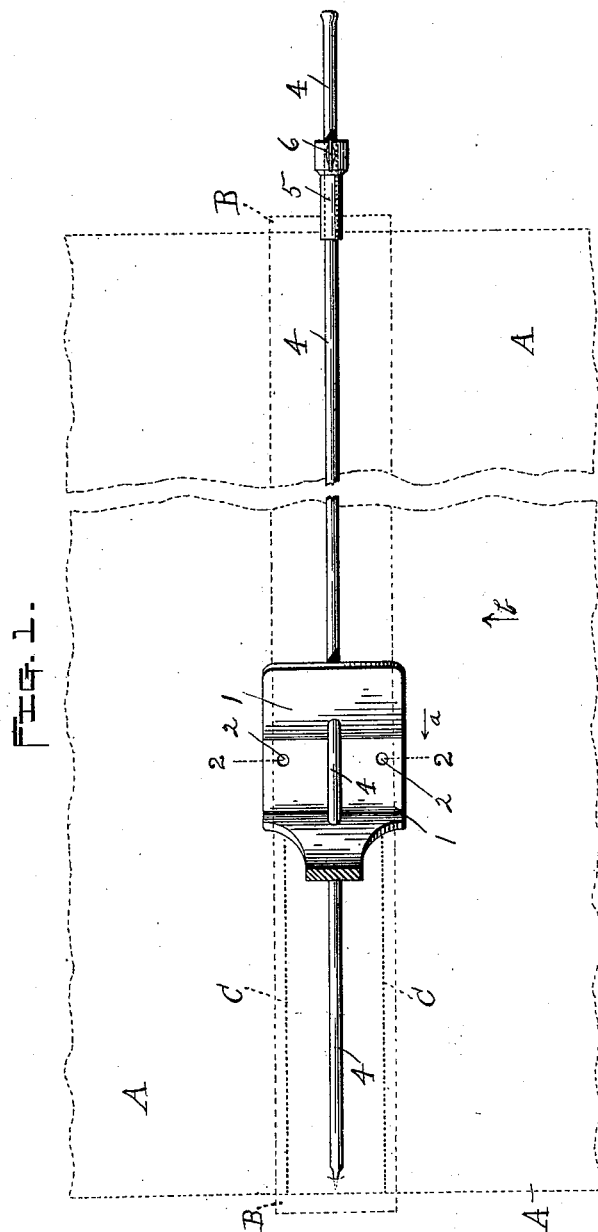
No. 646,267.

Patented Mar. 27, 1900.

C. W. DODGE.
GUIDE FOR SEWING MACHINES.

(Application filed Oct. 21, 1899.)

(No Model.)



Witnesses,

C. Forrest Wesson.
M. J. Galvin.

Inventor,

CARROLL W. DODGE.

By John C. Dewey, Atty

UNITED STATES PATENT OFFICE.

CARROLL W. DODGE, OF WORCESTER, MASSACHUSETTS.

GUIDE FOR SEWING-MACHINES.

SPECIFICATION forming part of Letters Patent No. 646,267, dated March 27, 1900.

Application filed October 21, 1899. Serial No. 734,317. (No model.)

To all whom it may concern:

Be it known that I, CARROLL W. DODGE, a citizen of the United States, residing at Worcester, in the county of Worcester and State of Massachusetts, have invented certain new and useful Improvements in Sewing-Machine Attachments, of which the following is a specification.

My invention relates to sewing-machines, and more particularly to machines for stitching corsets, and to a supplemental attachment to be used therewith.

In corset-stitching machines a plurality of needles is ordinarily used in stitching the several parts of the corset together, and more particularly in stitching onto the body material of the corset the vertically-extending tapes or strips. In the operation of stitching on these tapes or strips which extend upon the under surface of the corset material the operator cannot see them and it is difficult to make the stitching run straight and true and just at the edges of the strips to unite them to the body material.

The object of my invention is to provide a supplemental attachment or device to be used in connection with the ordinary corset-stitching machine, and particularly the presser-foot of the machine, by means of which the lines of stitching may be made exactly even and straight along the edges of the tapes or strips, as it is impossible for the operator to determine the proper direction of the stitching, as the tape or strip which extends upon the under surface of the material cannot be seen.

My invention consists in combining with the presser-foot of a sewing-machine, which is preferably slotted or provided with a groove, a guide rod or bar which extends and travels in the slot or groove in the operation of stitching. One end of the guide rod or bar is attached to the upper edge of the corset and the other end is attached to the lower edge of the corset during the stitching operation.

Referring to the drawings, Figure 1 is a plan view of the presser-foot of a sewing or stitching machine detached and the guide rod or bar used in connection therewith. A detached section of the corset material to be stitched is shown by broken lines. Fig. 2 is a section on line 2 2, Fig. 1, looking in the direction of arrow *a*, same figure. Fig. 3 is a

plan view of the presser-foot detached; and Fig. 4 is a side view of the guide rod or bar, looking in the direction of arrow *b*, Fig. 1.

I have shown in the drawings a presser-foot for two needles to form two rows of stitching *C*, one at each edge of the tape or strip *B* to be attached to the body *A* of the corset or other article; but it will be understood that one or more needles may be used, if desired.

In the accompanying drawings, 1 is a presser-foot of a sewing-machine of ordinary form and construction, except in this instance there is a slot or central opening 2 through the central portion of the foot intermediate the two guide-holes 3 3 for the two needles.

In connection with the slotted presser-foot 1 is used a guide rod or bar 4, which is preferably round in cross-section, as shown in Fig. 2. One end of the guide-rod 4 is pointed to extend into and be held in one edge of the body of the corset, preferably the upper edge, as shown in Fig. 1, to attach the guide-rod to the corset. The other end of the guide-rod 4 is provided with a sliding collar or sleeve 5, which may be adjusted on the rod 4, as desired, and held in place thereon by a small thumb-screw 6. On one end of the sleeve or collar 5 is a point or projection 7, which is adapted to extend into one edge of the body of the corset, preferably the lower edge, as shown in Fig. 1, to attach the guide-rod to the corset.

By means of the adjustable collar or sleeve 5 the rod 4 may be used with corsets of different lengths.

In using the guide-rod 4 said rod is first attached to the body of the corset, at the upper and lower edges thereof, as above described, and the tape or strip to be stitched to the body of the corset is applied to the undersurface thereof, where it is to be stitched thereto. The corset is then passed under the presser-foot 1, with the guide-rod 4 in position to extend in the slot therein, and the corset, with the rod 4, is drawn along by the feed, and the rod 4 acts to guide and hold the corset in position during the operation of stitching the tape or strip thereto, so that the stitching will be even and true and at the edges of the tape or strip, which, as above stated, cannot be seen by the operator during the stitching operation.

The advantages of my improvement will be readily appreciated by those skilled in the art. It is of very simple construction and can be combined and used with any ordinary presser-foot of a sewing-machine and acts to accurately guide the material during the operation of stitching.

I have described my improvements as used in connection with machines for stitching corsets; but they may equally well be used in other classes of machines for stitching other articles, if desired.

It will be understood that the details of construction of my attachment may be varied, if desired.

Having thus described my invention, what I claim as new, and desire to secure by Letters Patent, is—

1. The combination of a presser-foot of a sewing-machine having an elongated slot or groove in its bottom wall extended from the

under surface thereof, a rod or bar provided with means near its opposite ends for attachment to the material to be stitched, said rod or bar being readily engaged and disengaged by the said slot or groove and adapted to be moved longitudinally therein.

2. The combination with the presser-foot of a sewing-machine, having an elongated slot or groove therein to receive a guide rod or bar and provided with a needle-guide hole each side of the slot or groove, of a guide rod or bar pointed at one end, and provided with an adjustable collar or sleeve at its other end, with a projection or point thereon for attaching the rod to the material to be stitched, said rod adapted to travel in said groove, substantially as shown and described.

CARROLL W. DODGE.

Witnesses:

J. C. DEWEY,

M. J. GALVIN.