

No. 647,160.

Patented Apr. 10, 1900.

W. H. SILVER.  
BATH SEAT.

(Application filed Jan. 11, 1900.)

(No Model.)

Fig. 1.

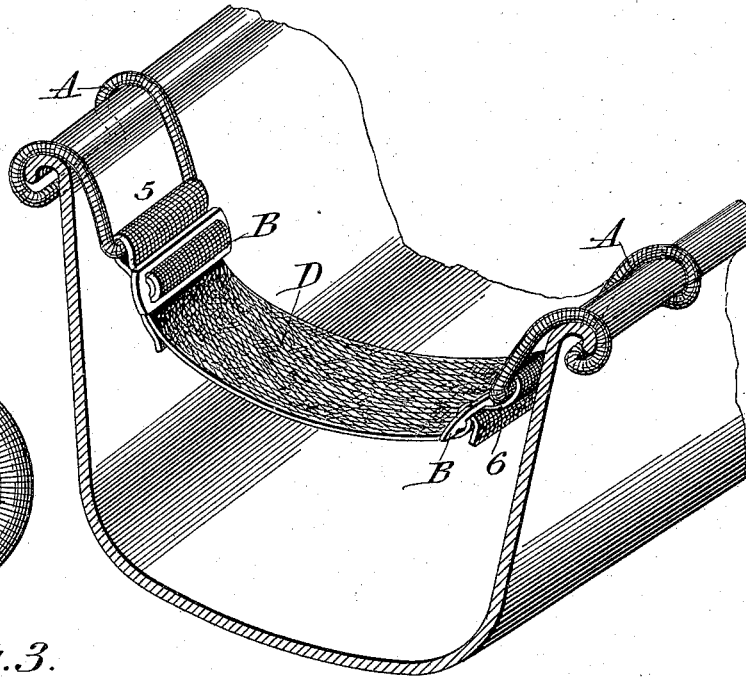


Fig. 3.

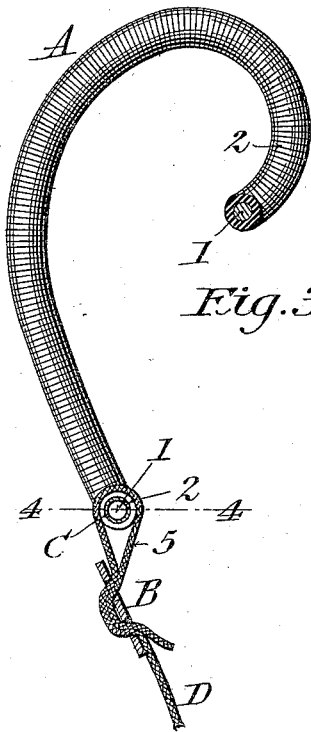


Fig. 2.

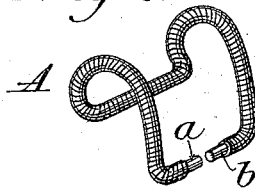


Fig. 4.

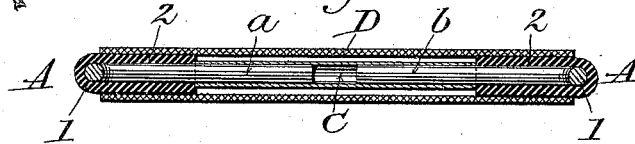
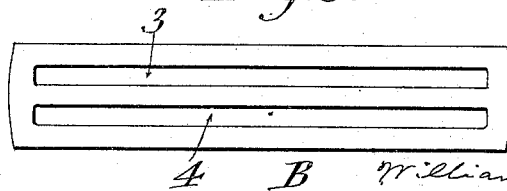


Fig. 5.



Witnesses:

A. M. Long,  
Geo. M. Copenhaver.

Inventor:

William H. Silver  
per *[Signature]* L. Edwin  
Attorney.

# UNITED STATES PATENT OFFICE.

WILLIAM H. SILVER, OF NEW YORK, N. Y.

## BATH-SEAT.

SPECIFICATION forming part of Letters Patent No. 647,160, dated April 10, 1900.

Application filed January 11, 1900. Serial No. 1,123. (No model.)

*To all whom it may concern:*

Be it known that I, WILLIAM H. SILVER, a citizen of the United States of America, and a resident of New York, in the borough of Brooklyn and State of New York, have invented a new and useful Improvement in Bath-Seats, of which the following is a specification.

This invention relates to seats for use within bath-tubs as means to facilitate the use of such tubs for foot-baths and sponge-baths.

The present invention consists in improved devices for adjustably supporting a non-chilling seat proper of suitable webbing or its equivalent and in the improved bath-seat comprising such supporting and adjusting devices.

The objects of the invention are to effectively attach such "webbing," as the seat proper is hereinafter termed, to rubber-covered "arms" suitably hook-shaped to hang securely on the edges of porcelain and like bath-tubs to facilitate applying the soft covers, whereby such arms are rendered noiseless and free from any liability to chip or otherwise deface the porcelain or enamel by contact therewith, and to adjust the webbing by simple one-part metallic "buckles" exposing very little surface.

A sheet of drawings accompanies this specification as part thereof.

Figure 1 of the drawings is a perspective view of the improved bath-seat applied to a bath-tub. Fig. 2 is a perspective view of one of the arms detached. Fig. 3 represents a vertical section through one of the arms and one end of the webbing, together with its buckle, on a larger scale. Fig. 4 represents a section on the line 4 4, Fig. 3; and Fig. 5 is an elevation of one of the buckles detached.

Like letters and numbers refer to like parts in all the figures.

The improved bath-seat is composed of a pair of arms A, one of which is shown in Fig. 2, a pair of slotted buckles B, one of which is shown detached by Fig. 5, as aforesaid, a pair of tubular thimbles C, Figs. 3 and 4, and webbing D of suitable length and width.

The arms A are of one and the same pattern. Each is suitably hook-shaped, as represented in Figs. 1, 2, and 3. Each arm is composed of a wire 1, which may be of iron or steel, as it is wholly inclosed, and a soft

cover 2 for said wire, preferably and conveniently of rubber tubing, and each arm comprises a pair of rigid fingers *a* and *b*, Figs. 2 and 4, projecting horizontally toward each other and partly covered by the ends of the soft cover 2, said fingers being formed by the extremities of the rebent wire 1, over either of which the one-part tubular cover is drawn into place. Each of the thimbles C is a short open-ended tube, preferably of tin, fitted to the fingers *a* and *b* of one of the arms A, as in Fig. 4, and serving as a strut to keep the sides of the arm the proper distance apart and as a bridge over the space between said fingers, which space may consequently be wider than would otherwise be practicable to facilitate covering the wire.

Each of the buckles B is constructed with parallel slots 3 and 4, Fig. 5, corresponding in length with the width of the webbing D and in width with two thicknesses of the same. Through these slots the webbing is threaded and rethreaded, as shown in Fig. 3, to form its end loops 5 and 6, and is shifted back and forth at will to shorten or lengthen the portion between said loops, and thus to lessen or increase the height of the seat above the bottom of the tub. Said loops 5 and 6 embrace said fingers *a* and *b* of the arms A and cover and conceal the extremities of the soft cover and the thimbles C between them, as in Fig. 4.

The buckles B may have more than two slots in each, if desired. The thimbles C may be of thicker metal, so as to be uniform in diameter with the covers 2. The latter may be of any suitable material, and other like modifications will suggest themselves to those skilled in the art.

Having thus described said improvement, I claim as my invention and desire to patent under this specification—

1. The combination, in a flexible bath-seat, of a hook-shaped "arm" composed of a suitably-rebent wire and a tubular soft cover for the same, and comprising rigid fingers projecting horizontally toward each other, and webbing looped around said fingers.

2. The combination, in a flexible bath-seat, of a hook-shaped arm composed of a wire and a cover of rubber tubing or the like, and comprising rigid fingers projecting horizontally toward each other and carrying the ends of

said cover, and webbing looped around said fingers and masking the extremities of said cover.

3. The combination, in a flexible bath-seat, 5 of a hook-shaped arm composed of a wire and a cover of rubber tubing or the like, and comprising rigid fingers projecting horizontally toward each other and partly covered by the ends of said cover, a tubular thimble embracing 10 said fingers between the ends of the cover, and webbing looped around said fingers and thimble.

4. An improved bath-seat composed of a

pair of hook-shaped arms, each comprising a pair of rigid fingers projecting horizontally 15 endwise toward each other, a pair of thimbles each embracing the two fingers of one arm, webbing looped around said fingers and thimbles, and a pair of buckles adjustably fastening the looped ends of said webbing, substan- 20 tially as hereinbefore specified.

WM. H. SILVER.

Witnesses:

NATHANIEL BILLINGS,  
GEORGE E. P. SMILEY.