

No. 647,165.

Patented Apr. 10, 1900.

G. E. STEAD & E. N. HEYDEMAN.  
 CONVERTIBLE BABY CARRIAGE.

(Application filed Feb. 3, 1899. Renewed Sept. 30, 1899.)

(No Model.)

2 Sheets—Sheet 1.

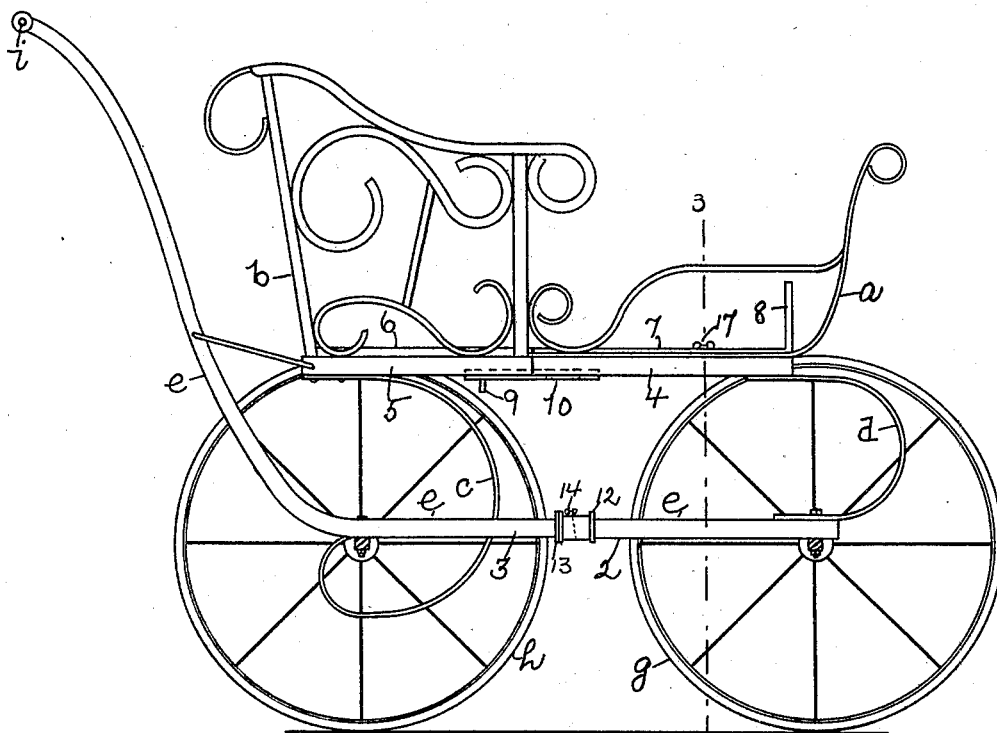


Fig. 1.

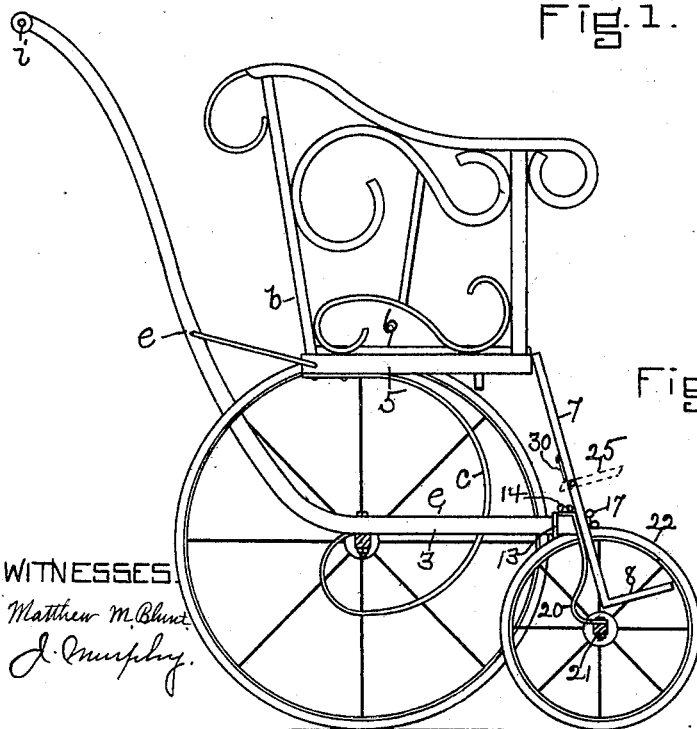


Fig. 2.

WITNESSES:

Matthew M. Blunt.  
 J. Murphy.

INVENTORS:

George E. Stead  
 Ernest N. Heydemann  
 By Jas. H. Churchill  
 ATT'Y.

No. 647,165.

Patented Apr. 10, 1900.

G. E. STEAD & E. N. HEYDEMAN.  
CONVERTIBLE BABY CARRIAGE.

(Application filed Feb. 3, 1899, Renewed Sept. 30, 1899.)

(No Model.)

2 Sheets—Sheet 2.

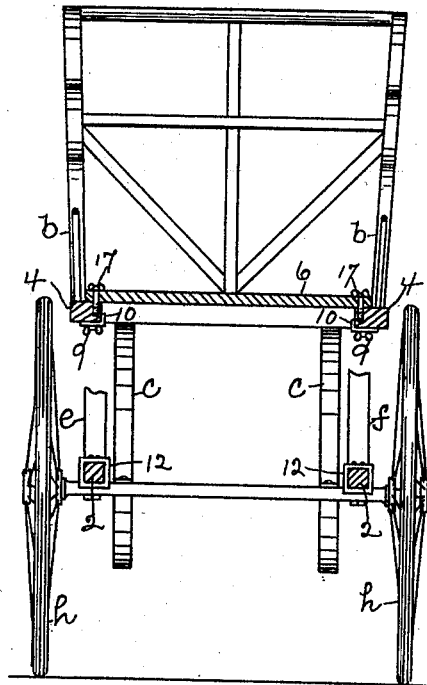


Fig. 3.

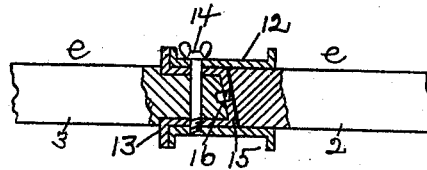


Fig. 4.

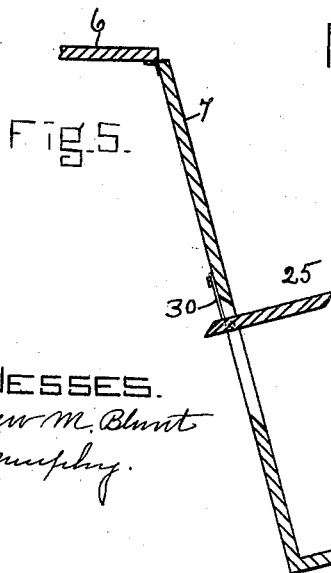


Fig. 5.

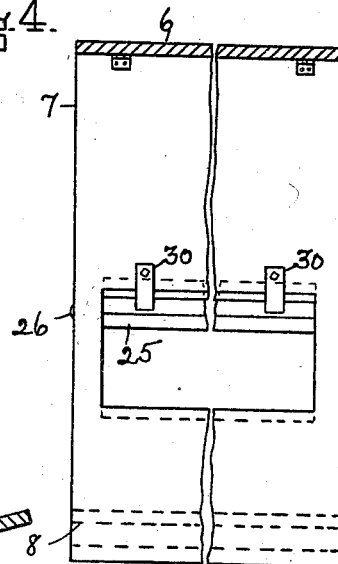


Fig. 6.

WITNESSES.  
Matthew M. Blunt  
J. Murphy.

INVENTORS  
George E. Stead  
Ernest N. Heydeman  
By Jas. H. Churchill  
ATT'Y.

# UNITED STATES PATENT OFFICE.

GEORGE E. STEAD AND ERNEST N. HEYDEMAN, OF BOSTON, MASSACHUSETTS.

## CONVERTIBLE BABY-CARRIAGE.

SPECIFICATION forming part of Letters Patent No. 647,165, dated April 10, 1900.

Application filed February 3, 1899. Renewed September 30, 1899. Serial No. 732,241. (No model.)

*To all whom it may concern:*

Be it known that we, GEORGE E. STEAD and ERNEST N. HEYDEMAN, citizens of the United States, residing at Boston, in the county of Suffolk and State of Massachusetts, have invented an Improvement in Convertible Baby-Carriages, of which the following description, in connection with the accompanying drawings, is a specification, like letters and figures on the drawings representing like parts.

This invention relates to a baby-carriage of novel construction, as will be described, whereby the said carriage may be used as such for wheeling babies in the usual manner and which may be readily converted into what is commonly known as a "go-cart" to be used for wheeling small children, and especially the baby when the latter has outgrown the baby-carriage. For this purpose the baby-carriage is made in sections or parts, as will be described, which in one condition are detachably secured together and form the baby-carriage and some of which parts in another condition or position are utilized to form the go-cart. These and other features of this invention will be pointed out in the claims at the end of this specification.

Figure 1 is a side elevation of a baby-carriage embodying this invention; Fig. 2, a side elevation of the same converted into a go-cart; Fig. 3, a cross-section on the line 3 3, Fig. 1; Figs. 4, 5, and 6, details to be referred to.

The baby-carriage in accordance with this invention has its body portion made in two parts or sections *a b*, supported upon springs *c d*, resting upon and secured to two side bars *e f*, each of which is also made in two parts or sections 2 3, which support the axles for the front and rear wheels *g h*. The sections 3 of the side bars are extended rearwardly and upwardly and joined by a cross-bar or handle *i* in the usual manner. The sections *a b* of the body portion are provided, respectively, with sections 4 5 of side bars, which support the bottom of the carriage. The bottom of the carriage is provided with a stationary portion 6 and with a movable front portion 7, having attached to it a foot-rest 8, the said movable portion being hinged or otherwise pivotally secured to the front end or edge of the stationary portion 6. The sections 4 of the body-

supporting bars may be secured to sections 5 by means of set-screws 9, extended up into the sections 5 through extensions or pieces 10, attached to the sections 4 of the body-supporting bars and projected beneath the sections 5 of said bars, as shown in Fig. 1. The side-bar sections 2 3 may be detachably secured together by a coupling composed, as herein shown, of a metal sleeve 12, attached to the section 2, and a metal sleeve 13, attached to the sections 3, (see Fig. 4,) the sleeve 12 extending over the sleeve 13 and being secured thereto by screw 14; but instead of the particular means shown for connecting the sections any other suitable or desirable means may be employed. The abutting ends of the sections of the side bars are inclined, as represented in Fig. 4, and the sleeve 13 may be provided with an end or head 15, which may be provided with a threaded socket 16 for a purpose as will be described. The front portion 7 of the bottom may be secured to the body-supporting bars by screws 17.

It will thus be seen that the sections or parts of the carriage may be firmly fastened together, as represented in Fig. 1, in which position the carriage is available for use as a baby-carriage, and when it is desired to convert the carriage into a go-cart available for use by small children who have outgrown the baby-carriage the screws 9 14 17 are removed and the front parts of the carriage, including the sections 4 2 and wheels *g*, may be drawn away from the rear part and the front portion of the bottom allowed to drop until it rests against the inclined ends of the side-bar sections 3, to which the said bottom section may be firmly secured by the screws 17, inserted through the bottom section into the threaded sockets 16, as represented in Fig. 2, the said screws being also used to fasten the end of springs 20, attached to the axle 21 of small wheels 22, which latter form the front wheels of the go-cart.

The springs 20 may, if desired, be provided with flanges 23, which extend over the metal sleeve 13 and are fastened thereto by the screws 14, which may be used for this purpose. The movable portion of the carriage-bottom thus forms a rest for the legs of the child, and, if desired, the said bottom portion

may be itself provided with one or more movable sections 25, normally flush with the remaining part of the leg-rest, but adapted to be turned on its pivot 26 into a position substantially at right angles thereto, as shown in Fig. 5, to form a foot-rest for small children.

The foot-rest 25 may be locked in its operative position (shown in Fig. 5) in any suitable manner—as, for instance, by pivoted dogs 30.

It will thus be seen that the vehicle herein shown may be readily converted from a baby-carriage into a go-cart, and vice versa.

We claim—

1. A baby-carriage having its front and rear portions separate and detachably secured together, and provided with a movable bottom portion to form a leg-rest when the front portion of the carriage is removed, substantially as described.

2. A baby-carriage having its body portion, its bottom and wheel-supporting bars made in sections, and means to detachably secure the sections of the said body portion and wheel-supporting bars together, substantially as described.

3. A baby-carriage having its front and rear portion detachably secured together, and provided with a movable front bottom portion having a foot-rest attached thereto, substantially as described.

4. A baby-carriage having its front and rear portion detachably secured together, and provided with a movable front bottom portion having a movable section normally flush with the remaining portion of said bottom portion but adapted to be projected at an angle thereto to form a foot-rest, substantially as described.

5. A baby-carriage having its body portion composed of front and rear sections detachably secured together, and springs supported upon side bars composed of sections detachably secured together, substantially as described.

In testimony whereof we have signed our names to this specification in the presence of two subscribing witnesses.

GEORGE E. STEAD.

ERNEST N. HEYDEMAN.

Witnesses:

JAS. H. CHURCHILL,

J. MURPHY.