

No. 647,446.

Patented Apr. 10, 1900.

DE BERT HARTLEY.
COMBINED DRESSER AND COMMODE.

(Application filed Feb. 16, 1899.)

(No Model.)

2 Sheets—Sheet 1.

Fig. 1.

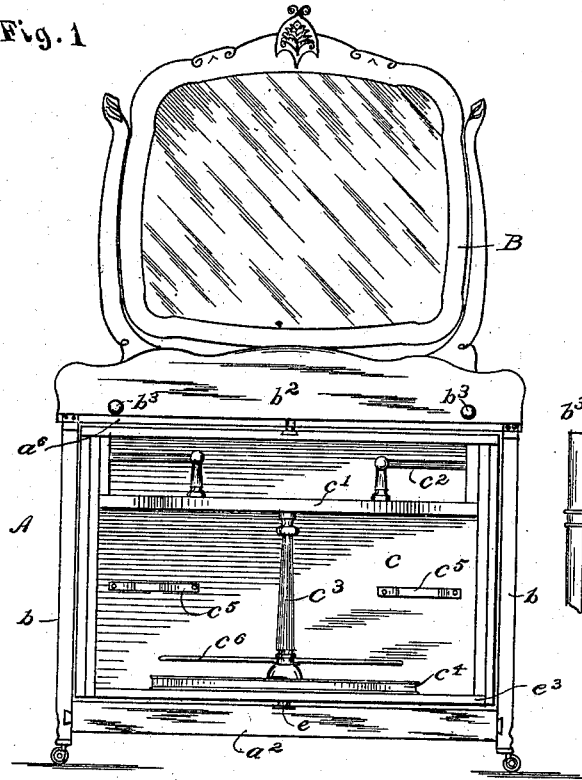


Fig. 5.

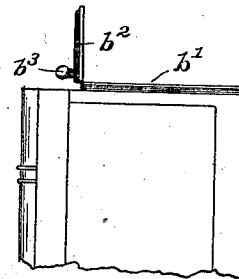


Fig. 2.

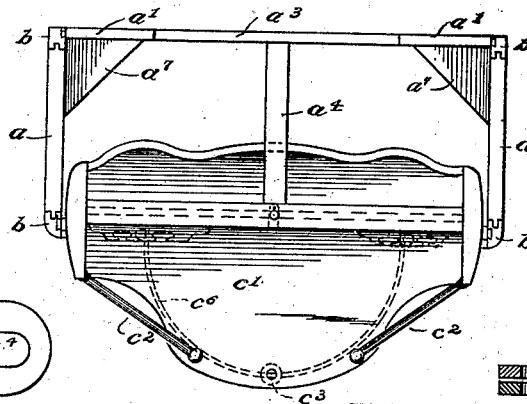
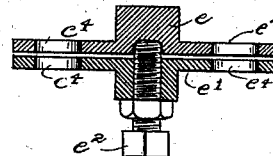


Fig. 3.



Fig. 4.



Witnesses:

S. S. Noble
Louis Chase,

Inventor,

De Bert Hartley,
By F. Benjamin
Att'y.

No. 647,446.

Patented Apr. 10, 1900.

DE BERT HARTLEY.
COMBINED DRESSER AND COMMODE.

(Application filed Feb. 16, 1899.)

(No Model.)

2 Sheets—Sheet 2.

Fig. 6

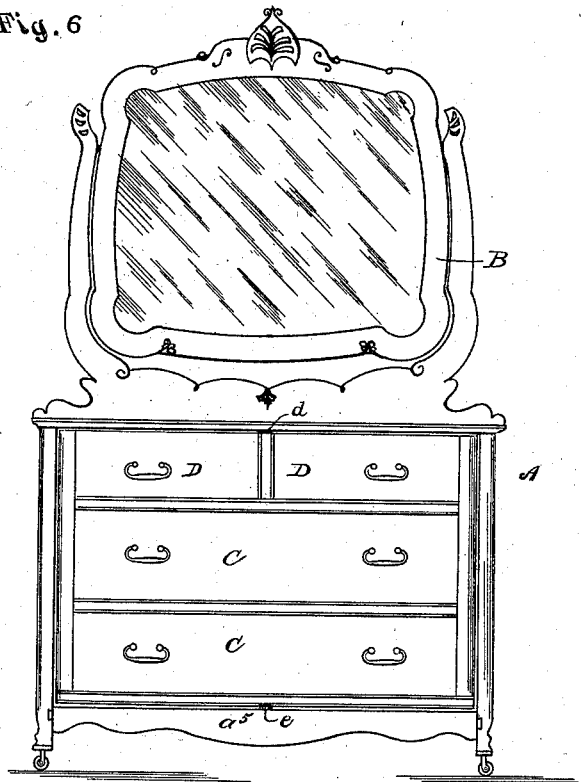


Fig. 7

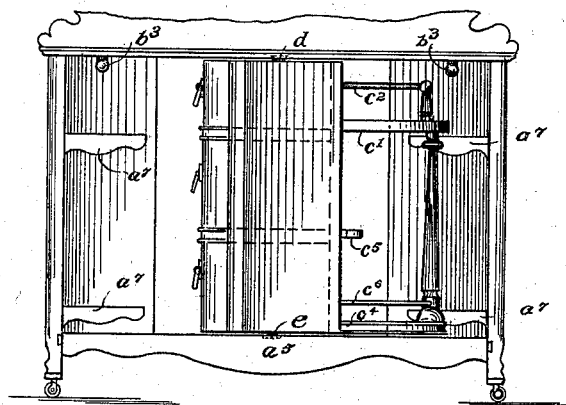


Fig. 8

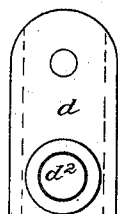
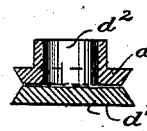


Fig. 9



Witnesses:

S. S. Noble.
Louis Chase,

Inventor
De Bert Hartley
M. J. Chapman.
Att'y.

UNITED STATES PATENT OFFICE.

DE BERT HARTLEY, OF CHICAGO, ILLINOIS, ASSIGNOR TO THE HARTLEY MANUFACTURING COMPANY, OF ILLINOIS.

COMBINED DRESSER AND COMMODE.

SPECIFICATION forming part of Letters Patent No. 647,446, dated April 10, 1900.

Application filed February 16, 1899. Serial No. 705,636. (No model.)

To all whom it may concern:

Be it known that I, DE BERT HARTLEY, a citizen of the United States, residing at Chicago, county of Cook, and State of Illinois, have invented certain new and useful Improvements in a Combined Dresser and Com-

mode, of which the following is a specification. My invention consists in combining with a dresser of ordinary external appearance and having drawers and a mirror a commode in which there is room for the usual washbowl, slop-jar, &c., and in which there is especial provision made for hanging towels and holding hair and clothes brushes, curling-tongs, and other accessories of the toilet. There is also provision made for shelves for holding bottles, soaps, and other conveniences, so that the same are not exposed to sight in the ordinary use of the dresser or commode.

The objects of my improvements in the construction of this compound article of furniture are to save expense in furnishing a room and to economize space therein, to lessen work in the care of the furniture, to give a neat and ornamental appearance to the article, and to conceal generally the objectionable features usually exposed to view on an ordinary commode or washstand.

A further object is to utilize the mirror ordinarily made a part of the dresser as an accompaniment of the commode, so that the one mirror answers for both dresser and commode.

A further object is to do away with the use of all springs, hinges, cranks, weights, and grooves, such as are common in many combination articles of furniture and which render them so liable to get out of order and to accumulate dirt that they are commercially not practical.

A still further object is to construct the supporting-frame of the article of furniture in a strong and secure manner in order that it may not spread apart, but will withstand the strain to which it will be ordinarily subjected.

A further object is to so arrange and balance the adjustable part of the device that it will swing easily and occupy but little space in its rotary movement outside of the supporting-frame.

In the accompanying drawings, which form

a part of this application, I have shown my invention in a series of views, as follows:

Figure 1 represents a front elevation of my invention when in position for use as a commode. Fig. 2 is a top view of Fig. 1 with the top of the dresser removed. Fig. 3 is a detail plan view of the pivoting-plate used, and Fig. 4 is a sectional view through the pivoting-plates and their connecting screw-bolt. Fig. 5 is a detail in side elevation of a portion of Fig. 1, showing the position of the splasher-board of the dresser. Fig. 6 is a front elevation of the dresser complete. Fig. 7 is a front elevation showing the commode portion of my invention partly rotated and disclosing the shelves in the rear of the dresser. Figs. 8 and 9 are details of the pivots used at the top of the commode.

Like reference-letters indicate like parts in the several views.

Referring to the drawings, it will be seen that the letter A indicates a dresser, to which is secured the usual mirror B, which incloses movable drawers C C and small dummy-drawers D D. The dresser is made up of the sides a , back cases a' , lower front cross-brace a^2 , and lower rear cross-brace a^3 , a central brace a^4 connecting the cross-braces a^2 and a^3 . In order to secure the sides and back of the frame firmly and rigidly together, I provide corner-posts b , having therein longitudinal grooves, into which the side and back pieces are dovetailed in the usual manner, and to brace these parts the front and rear pieces a^2 and a^3 are dovetailed and let into suitable recesses in the corner-posts, thus preventing the latter from spreading in any direction. The cross-brace a^2 is hidden from view by a piece a^5 , which has curved outline, giving an ornamental finish to that portion of the device. The top of the dresser is formed of a main portion b' , to which is hinged the piece b^2 , which forms the front of said top. Extending forwardly from the lower portion of the hinged section b^2 are knobs b^3 , for a purpose to be explained.

Extending across the top and front of the dresser-frame is a bar a^6 , and in the center of this bar and the bar a^2 , which are made unusually heavy for that purpose, is pivoted a rotating portion of my invention, which is

constructed as follows: Extending longitudinally through the rotatable portion is a partition *c*, which divides the commode portion from the drawers C and D. On the commode side of the partition extends at right angles thereto a shelf *c'*, which supports the wash-bowl, soap-dish, &c. Secured to the front edge of the shelf *c'* are arms *c''*, which form suitable racks for towels and at the same time as a railing for the protection of articles on top of the dresser. This shelf is supported by a vertical post *c'''*, the lower end of which is secured to a second shelf *c''''*, which extends from the back or partition *c*. Secured to the partition *c*, about half-way between the two shelves *c'* *c''''*, are brackets *c'''''*, which are adapted to hold clothes-brush, hair-brush, curling-tongs, and other accessories of the toilet. Having its ends secured in the partition *c* and extending or bowed outwardly at a slight distance above the shelf *c''''* is a metal rod *c''''''*, which is adapted to protect the slop-jar, water-pitcher, &c., and prevent them from falling out upon the rotation of the commode. On the opposite side of the partition from the dresser are placed sliding drawers C C of ordinary construction. Above these drawers are the dummy-drawers D D, access to which is attainable by raising the hinged lid *d''*. In the rear corners of the frame are placed triangular shelves *a''*, which are adapted to hold bottles, boxes, and other articles not intended for constant use and which it is desirable to have out of sight. The pivots used in my invention are composed of a perforated plate *d*, which is let into the under side of the front edge of the top *b'*, and a plate *d'*, having formed therewith lid *d''*, which fits the perforation in the plate *d*. This plate *d'* is secured in any suitable manner to the upper edge of the partition *c* or to a cross-bar which may be placed over said upper edge.

For the lower side or bottom of the revolving portion of my device I provide a pivotal connection, which consists of a slotted plate *e* to be attached to the under side of the lower edge of the partition *c* or to a cross-bar *e''*, secured to said lower edge, and a plate *e'*, which is slotted and centrally perforated for the reception of a threaded bolt *e''''*. The plate *e'* is secured to the cross-bar *a''*, and the bolt *e''''* passes through a vertical opening in the said bar up through the threaded opening in the plate *e'* until the end of said bolt enters a re-

cess in the center of the plate *e*. The elongated slots *e''* in the plates *e* and *e'* permit of lateral adjustment to said plates, so as to provide for the proper adjusting of the revolving portion of the device, and the vertical adjustment of the nut *e''''* will provide for any sagging of the supporting cross-bar *a''*, thus preventing any binding between the said cross-bar and the revolving portion of the device.

It will be apparent that when the hinged section *d''* of the top *d'* is down or horizontal the knob *d'''* will rest in a vertical position within the drawers D D and below the upper edges of their sides or ends, thus preventing the rotating of the device. Normally the device will be arranged as a dresser, as shown in Fig. 6, and in order to utilize it as a commode it will be necessary to raise the part *b''*, when the commode may be turned to the front, in which position the part *b''* forms a splasher-board for the commode. I prefer to construct my device with an open back, as shown in Fig. 7, for the purpose of affording ventilation for the commode part; but this, however, is not essential. In order to gain access to the shelves *a''*, it is necessary to partially rotate the device, as shown in Fig. 7.

It will be apparent that various modifications may be made in the arrangement of the parts forming the commode feature of my device without departure from the principles involved in its construction.

Having thus described my invention, what I claim as new, and desire to secure by Letters Patent, is—

In a combined dresser and commode, a supporting-frame, a rotatable part pivoted in said frame, and provided with a compartment and sliding drawers on one side and with rods and shelves on the other side, shelves secured to the rear corners of the frame, a top for said frame having a hinged section provided with knobs or the like adapted to engage said rotatable part and lock it in a closed position, and adjustable pivotal connections between said frame and rotatable part, substantially as set forth.

In testimony whereof I affix my signature in presence of two witnesses.

DE BERT HARTLEY.

Witnesses:

L. HANKL,
J. BUEHLER.