

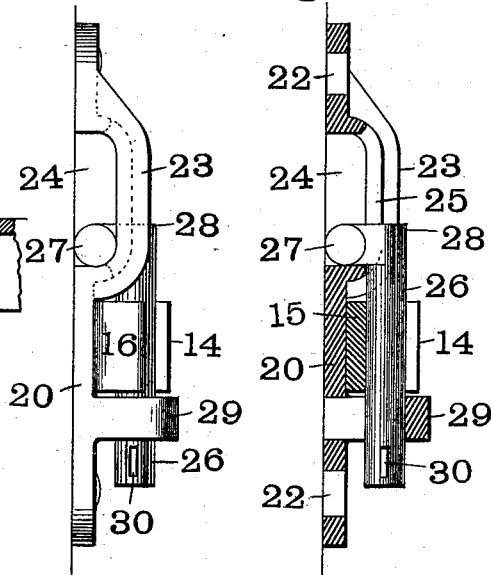
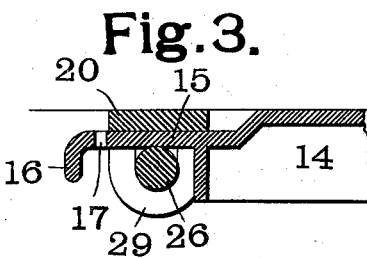
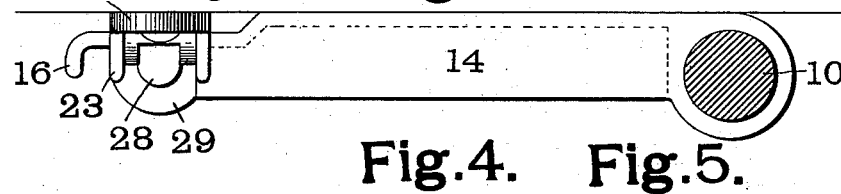
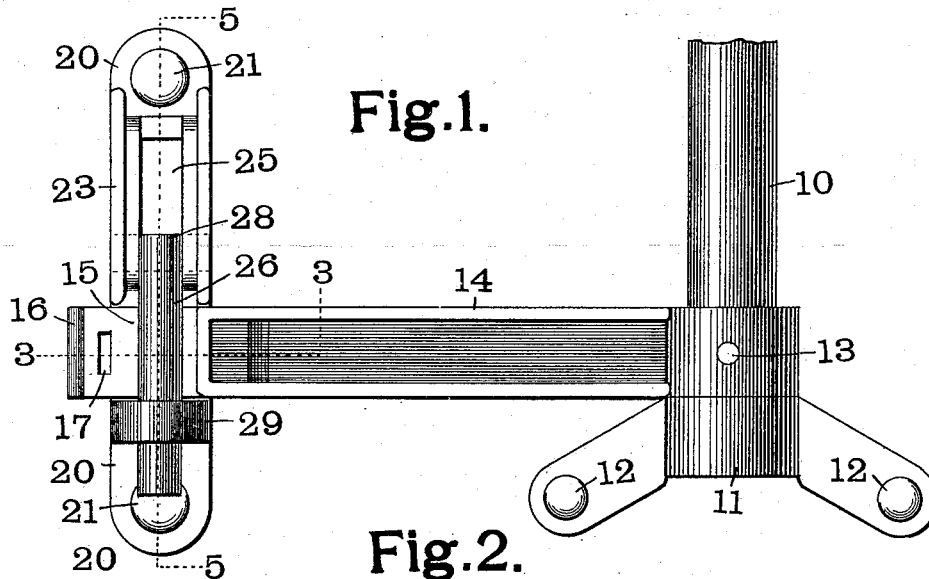
No. 648,564.

Patented May 1, 1900.

L. A. HOERR.  
SEAL LOCK.

(Application filed Oct. 30, 1899.)

(No Model.)



Witnesses  
W. A. Alexander  
David Stannard

Inventor  
Louis A. Hoerr  
By Attorneys  
Fowler & Fowler

# UNITED STATES PATENT OFFICE.

LOUIS A. HOERR, OF ST. LOUIS, MISSOURI.

## SEAL-LOCK.

SPECIFICATION forming part of Letters Patent No. 648,564, dated May 1, 1900.

Application filed October 30, 1899. Serial No. 735,146. (No model.)

*To all whom it may concern:*

Be it known that I, LOUIS A. HOERR, a citizen of the United States of America, residing at St. Louis, in the State of Missouri, have invented a certain new and useful Seal-Lock, of which the following is such a full, clear, and exact description as will enable any one skilled in the art to which it appertains to make and use the same, reference being had to the accompanying drawings, forming part of this specification.

My seal-lock is especially adapted for use in connection with a flush door which is moved laterally by means of a rock-shaft; but it may be used in connection with various other kinds of doors.

My invention consists in various novel features and details of construction, all of which are shown in the following specification and pointed out in the claims affixed hereto.

In the accompanying drawings, which illustrate a seal-lock made in accordance with my invention, Figure 1 is a front elevation. Fig. 2 is a top plan view. Fig. 3 is a section on the line 3 3 of Fig. 1. Fig. 4 is an end elevation, and Fig. 5 is a section on the line 5 5 of Fig. 1.

Like marks of reference refer to similar parts in the several views of the drawings.

10 represents a rock-shaft which may operate to move the door in and out laterally by any suitable mechanism. The end of the rock-shaft 10 is journaled in a lug 11, secured to the door by bolts 12 or in any other suitable way. Secured to the rock-shaft 10, preferably by means of a rivet 13, is a hasp 14. The end 15 of the hasp 14 is made thin, as best shown in Fig. 3, and is preferably provided with an outturned part 16 and seal-wire opening 17.

20 is the keeper, which is secured to the car-door by means of bolts 21, passing through openings 22, Fig. 5. The keeper 20 is provided with a forwardly-projecting part 23, thus leaving a rear pocket 24. The forwardly-projecting part 23 is arranged so as to come above the hasp 14 when it is in its closed position. Formed in the forwardly-projecting part 23 is a slot 25, which communicates with the rear pocket 24. Projecting through the slot 25 is a pin 26, provided with a cylindrical head 27. The ends of the head 27 project at

the sides of the pin 26 and form trunnions which slide in the rear pocket 24. The upper end 28 of the pin 26 is made square, as best shown in Fig. 5, so that the pin 26 cannot be removed from the keeper by turning it in a horizontal position and withdrawing the head 27 through the slot 25. The keeper 20 is provided below the hasp 14 with a forwardly-projecting loop 29, which is adapted to receive the end of the pin 26. Formed in the lower end of the pin 26 is a seal-wire opening 30.

In using my seal-lock the pin 26 is slid upwardly until the head 27 strikes the upper end of the pocket 24. The pin can then be swung outwardly and upwardly, the ends of the head 27 acting as trunnions, so as to leave the hasp 14 free to be drawn outwardly to rotate the rock-shaft 10. In closing the door the above movements are reversed and the lock is sealed either by passing a seal-wire through the seal-wire opening 30 or through both the seal-wire openings 30 and 17.

Having fully described my invention, what I claim as new, and desire to secure by Letters Patent of the United States, is—

1. In a seal-lock, the combination with a keeper provided with a rearwardly and laterally opening elongated pocket and a forwardly-opening slot, of a pin provided with an integral cylindrical head, the ends of which project at the sides of said pin and form trunnions, said trunnions sliding in said pocket, and a loop carried by said keeper and cooperating with said pin.

2. In a seal-lock, the combination with the keeper 20 provided with the rearwardly and laterally opening pocket 23 and forwardly-opening slot 25, of the pin 26 provided with the cylindrical head 27 and square end 28 for preventing the turning of said pin and withdrawal of said head through said slot 25, and the loop 29 carried by said keeper and cooperating with said pin.

In testimony whereof I have hereunto set my hand and affixed my seal in the presence of the two subscribing witnesses.

LOUIS A. HOERR. [L. s.]

Witnesses:

W. A. ALEXANDER,  
DAVID STANNARD.