

No. 648,613.

Patented May 1, 1900.

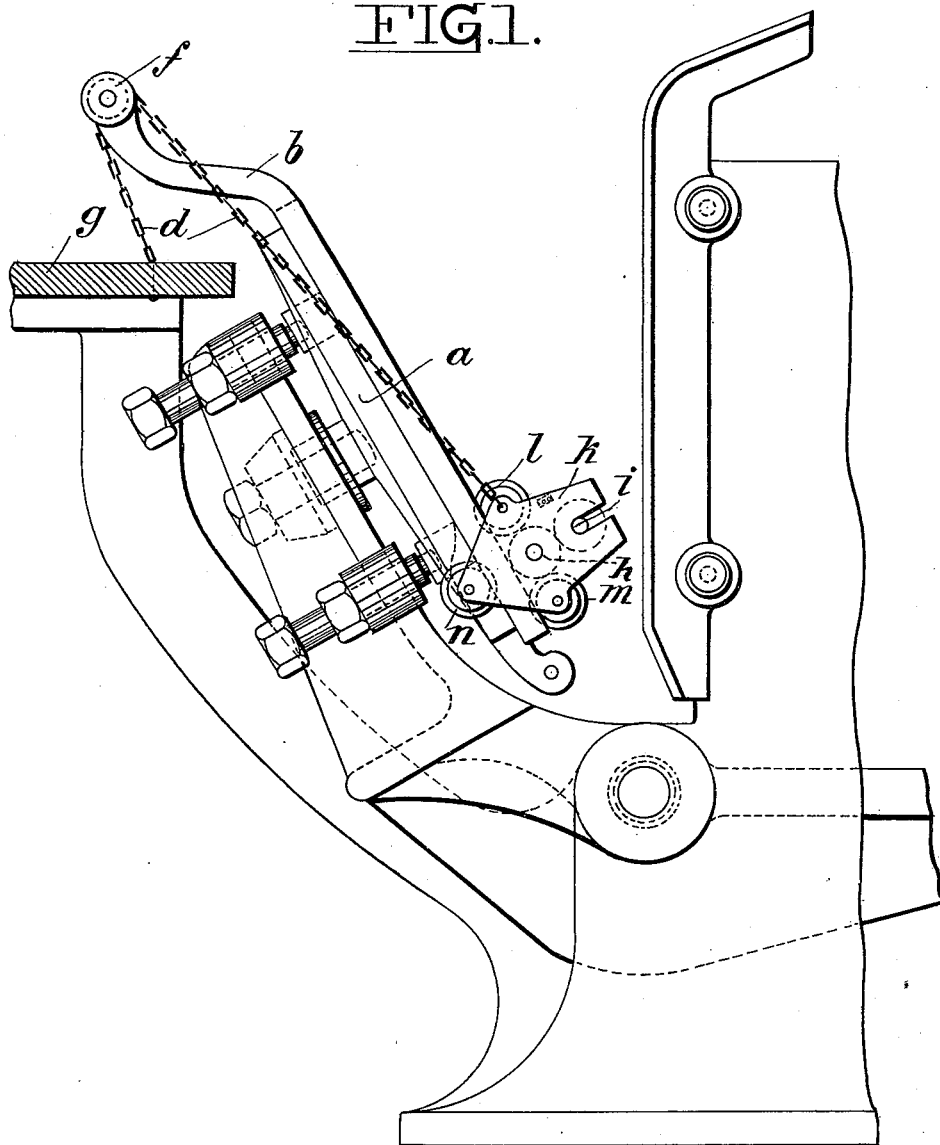
J. B. GROSSE.
PLATEN PRESS.

(Application filed Dec. 22, 1898.)

(No Model.)

4 Sheets—Sheet 1.

FIG. 1.



Witnesses:
Seppert Mershuny
Hugo Böhme.

Inventor:
Johann Bernhard Grosse
by: *Eustace W. Chapman*
Att'y.

No. 648,613.

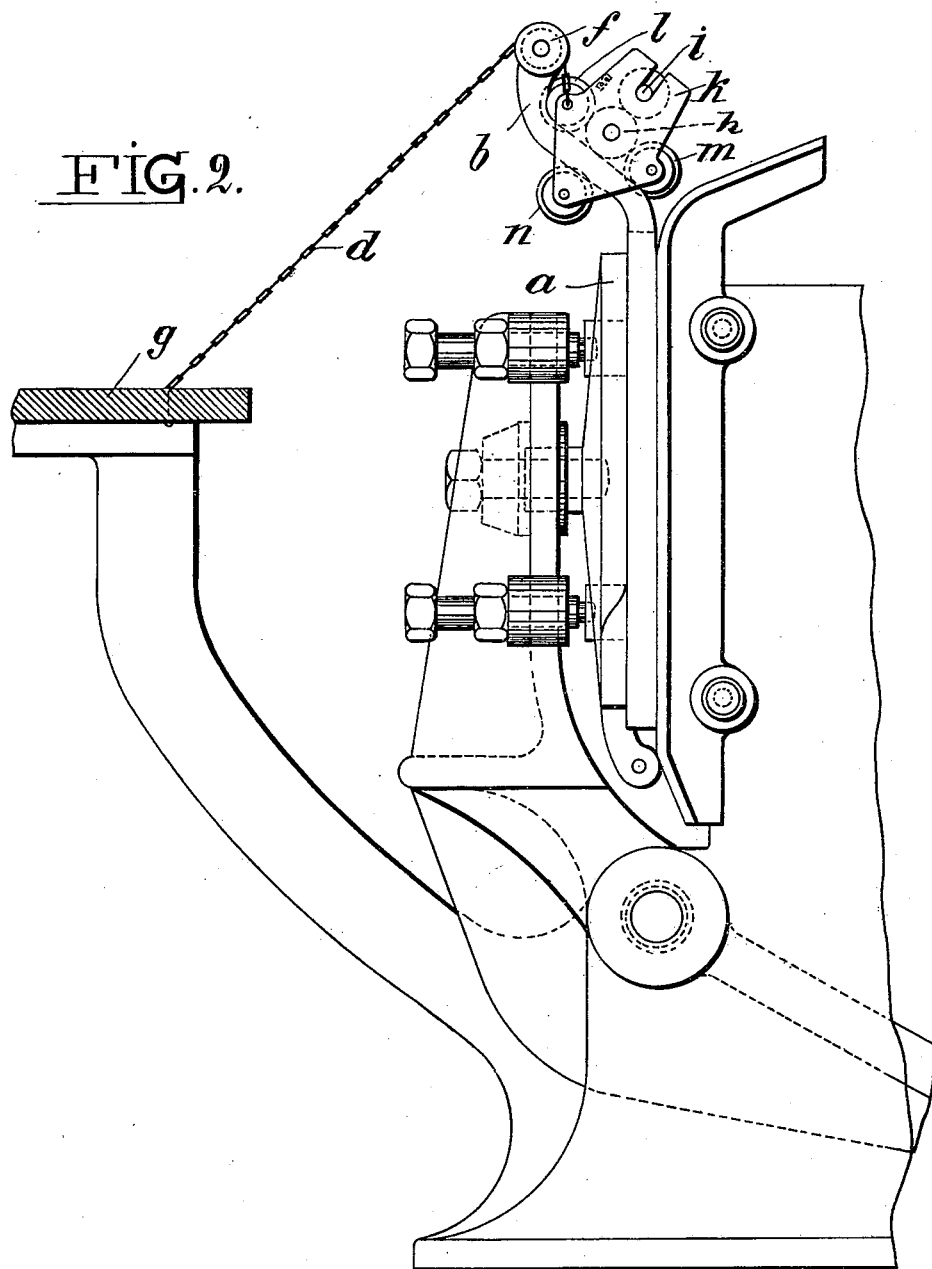
Patented May 1, 1900.

J. B. GROSSE.
PLATEN PRESS.

(Application filed Dec. 22, 1898.)

(No Model.)

4 Sheets—Sheet 2.



Witnesses:

Alfred M. Schumacher

Hugo Schumacher

Inventor:

Johann Bernhard Grosse

by: *E. Schumacher*
Att'y.

No. 648,613.

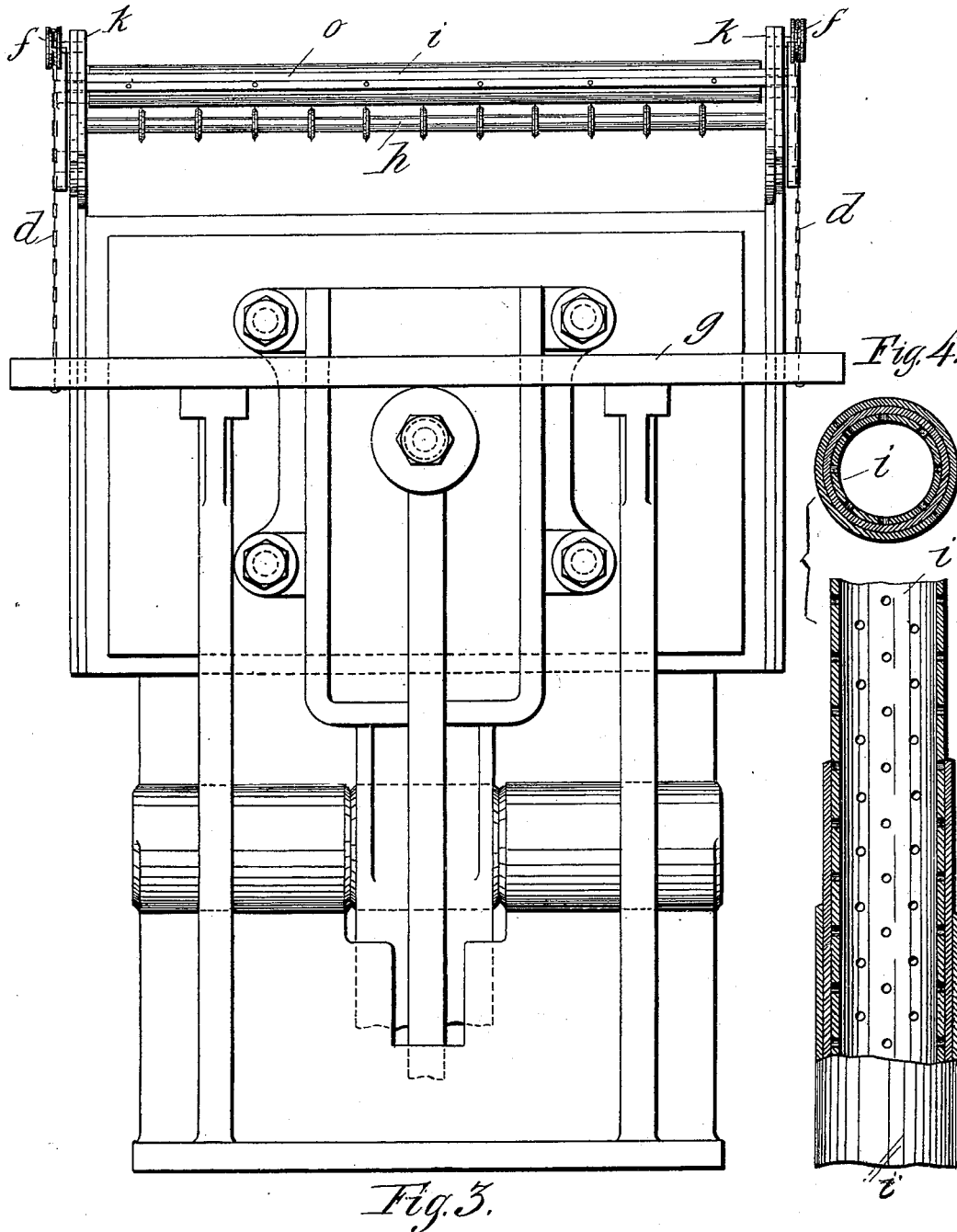
Patented May 1, 1900.

J. B. GROSSE.
PLATEN PRESS.

(Application filed Dec. 22, 1898.)

(No Model.)

4 Sheets—Sheet 3.



Witnesses:-
Alfred Meisinger
Hugo Böhme

Inventor:-
Johann Bernhard Grosse
by Eustach W. Hopf
att'y

No. 648,613.

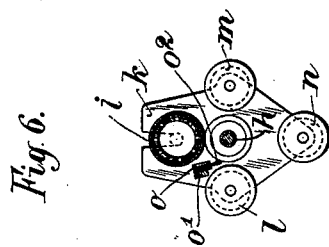
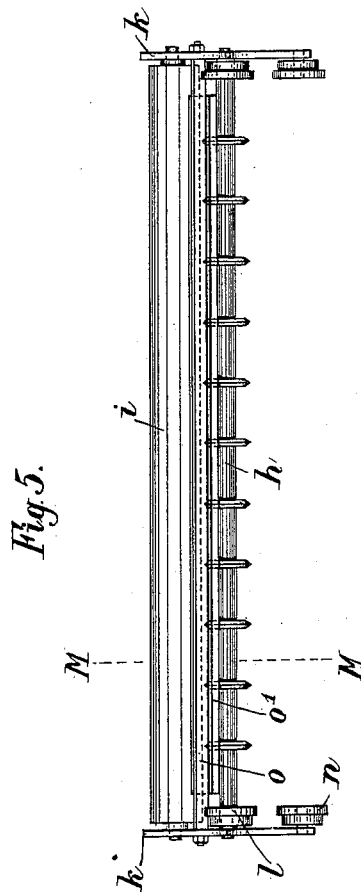
Patented May 1, 1900.

J. B. GROSSE.
PLATEN PRESS.

(Application filed Dec. 22, 1898.)

(No Model.)

4 Sheets—Sheet 4



Witnesses:

Walter Jesse
Walter Jesse

Inventor:

Joachim Bernhard Grosse.

by *Eustace W. Hoppe*
Att'y.

UNITED STATES PATENT OFFICE.

JOHANN BERNHARD GROSSE, OF LEIPSIC-LINDENAU, GERMANY.

PLATEN-PRESS.

SPECIFICATION forming part of Letters Patent No. 648,613, dated May 1, 1900.

Application filed December 22, 1898. Serial No. 700,044. (No model.)

To all whom it may concern:

Be it known that I, JOHANN BERNHARD GROSSE, a subject of the King of Saxony, residing at Leipsic-Lindenau, Kingdom of Saxony, Germany, have invented certain new and useful Improvements in Platen-Presses, of which the following is a full, clear, and exact description.

The present invention relates to platen-presses; and it consists of a device by means of which the paper or other material to be printed may be simultaneously ruled.

In order to render the present specification more easily intelligible, reference is had to the accompanying drawings, in which similar letters of reference denote similar parts throughout the several views.

Figure 1 is a side elevation of a platen-press with the ruling device about to operate. Fig. 2 is a similar elevation showing the press with the platen pressed against the type. Fig. 3 is a front elevation of the press; Fig. 4, a detail cross-section and longitudinal section of the combined ink roller and reservoir. Fig. 5 is a detached view of the inking-roll shaft and brush-bar, and Fig. 6 a cross-section, on line M M of Fig. 5.

To the platen *a* are attached rails *b b*, on which the carriage, with the ruling device, runs. At the upper ends of the said rails are guide-rolls *ff* for chains or cords *d*, having one end attached to the ruling device and the other to a stationary bar *g* of the press-frame, so that when the platen is turned on its hinge to bring the paper onto the type-box the carriage, with the ruling device, will be drawn upwardly and will cause the line-producing disks to pass over the paper before the latter comes into contact with the type. The carriage consists of the end plates *k k*, which are guided on the rails *b b* by means of, advantageously, three rolls *l m n* and connected together by means of a cross-bar *o*. Between these plates and mounted to rotate in the same is the shaft *h*, having the ruling-disks and an inking-roll *i*. (Shown in detail in Fig. 4.) This roll *i* serves simultaneously as ink roller or reservoir, being hollow and perforated and provided with suitable coverings of cloth or any suitable material capable of absorbing the color or ink. This roll supplies the color or ink to the disks of the shaft

h. The bar *o*, which connects the end plates *k k*, is advantageously provided with a strip *o'* of felt, Figs. 5 and 6, or similar material arranged to brush the ruling-disks, and also with a second strip or brush *o''* to brush the ink-roller *i* and take any superfluous ink or color off the same. Instead of felt a brush may be attached along the said bar.

The operation of the device will be clear from the foregoing specification. When the platen is thrown back, the ruling-carriage is at the bottom of the same, as shown in Fig. 1, and as the platen is moved toward the type the carriage *k k* is drawn upwardly over the paper on the platen, ruling the same, and finally arriving at the top of the rails out of the way of the type when the platen is pressed onto the latter.

I claim as my invention—

1. In a platen-press the combination of a shaft having ruling-disks thereon, means for inking the disks and means for moving the said shaft across the paper when the platen is turned to approach the type substantially as described.

2. In a platen-press the combination of a ruling device and means for passing the same over the paper or other material being printed, while the platen is being passed from its initial position to the type substantially as described.

3. In a platen-press the combination of rails at either side of the platen, a carriage to run on same and having a ruling-shaft with disks and means for inking the same and means for passing said carriage from the bottom to the top of the platen while the latter is being moved toward the type substantially as described.

4. In a platen-press the combination of rails at either side of the platen, a carriage to run on said rails said carriage having a shaft with ruling-disks mounted thereon and an inking-roller with ink-reservoir, guide-rolls at the top of the rails and cords or chains attached at one end to the carriage and at the other to a stationary part of the press in the manner and for the purpose substantially as described.

5. In a platen-press the combination of a carriage having a ruling device as specified and means for passing the same over the

platen while the latter is being moved and
an inking-roll to said ruling device consisting
of a perforated cylinder having stuff covering
in the manner and for the purpose substan-
5 tially as described.

6. In a platen-press the combination of a
carriage having a ruling device thereon and
means for operating the same as specified, a
cross-bar to said carriage having a brush to

brush both the inking-roll and the ruling- 10
disks substantially as described.

In witness whereof I have hereunto set my
hand in presence of two witnesses.

JOHANN BERNHARD GROSSE.

Witnesses:

MORITZ SPREER,
RUDOLPH FRICKE.