

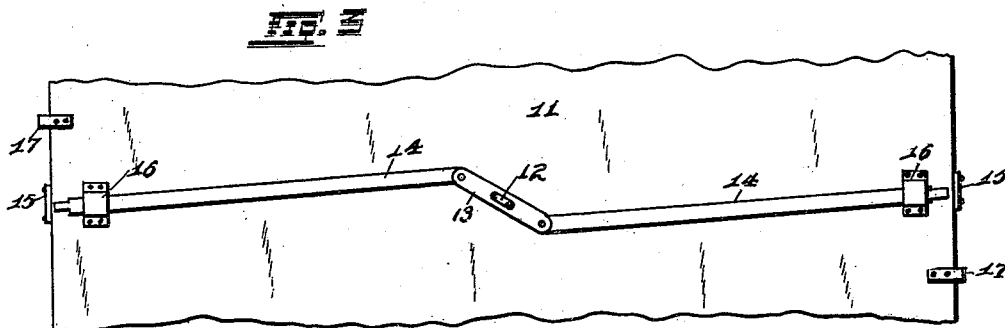
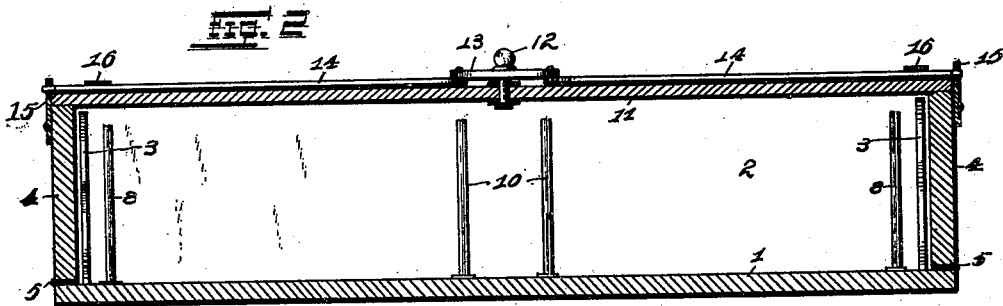
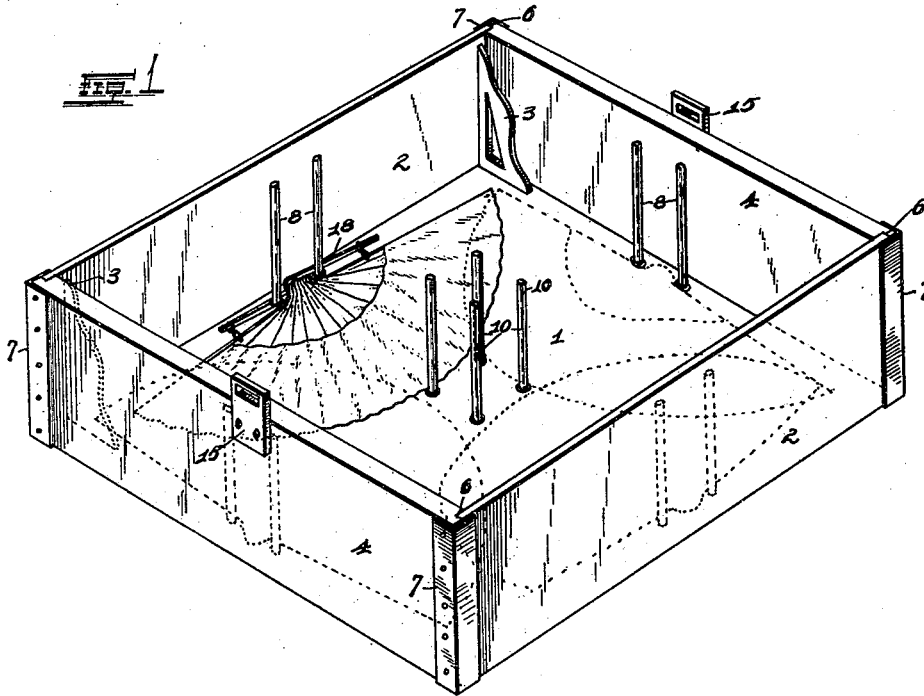
No. 648,712.

Patented May 1, 1900.

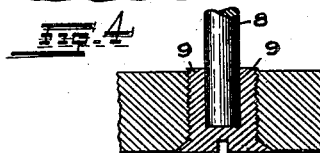
J. H. RIVERS.
FAN TRAY.

(Application filed Jan. 22, 1900.)

(No Model.)



Witnesses:
Alfred W. Eichner
J. D. Rippey



Inventor.
Julian H. Rivers.
By Higdon & Longan Attys.

UNITED STATES PATENT OFFICE.

JULIAN H. RIVERS, OF ST. LOUIS, MISSOURI.

FAN-TRAY.

SPECIFICATION forming part of Letters Patent No. 648,712, dated May 1, 1900.

Application filed January 22, 1900. Serial No. 2,390. (No model.)

To all whom it may concern:

Be it known that I, JULIAN H. RIVERS, of the city of St. Louis, State of Missouri, have invented certain new and useful Improvements in Fan-Trays, of which the following is a full, clear, and exact description, reference being had to the accompanying drawings, forming a part hereof.

This invention relates to fan-trays; and it consists of the novel construction, combination, and arrangement of parts hereinafter shown, described, and claimed.

The object of this invention is to construct a device by means of which fans retained in an open position by any suitable means may be transported from place to place in their distended shape without danger of becoming damaged from any cause whatever.

Figure 1 is a view in perspective of my improved fan-tray, showing the means by which the fans are retained in position. Fig. 2 is a sectional view showing the lid in position and the means made use of in retaining it there. Fig. 3 is a plan view showing the locking device employed in carrying out my invention. Fig. 4 shows the means by which the standards or uprights are retained in the desired adjustment.

In the drawings, 1 indicates a bottom rectangular in shape, to the opposite sides of which are rigidly secured the vertical side strips 2, further secured in their upright position by suitable braces 3. I provide doors 4, pivotally secured to the bottom 1 by hinges 5, which doors are on opposite sides of the bottom and are provided with notches 6 on their ends, into which the ends of the strips 2 fit when the doors are closed, as shown in Fig. 1. I also provide corner-brackets 7, secured to the ends of the doors 4, which are for the purpose of inclosing the ends of the strips 2 and giving additional strength to them.

At suitable distances from the sides of the tray constructed as described above I provide uprights or standards 8, a pair of which are made use of at each side of the tray. The standards are removably projected into a seat comprising the hollow screws 9, threaded into apertures in the bottom 1 of the tray. Near

the center of the bottom 1 I place four other uprights 10, arranged, as shown in Fig. 1, in alinement with the opposite side standards.

I provide a lid or cover 11 of equal area with the bottom, in the center of which is rotatably carried a knob 12. The said knob 12 carries a short lever 13, pivotally secured to each end of which is a metallic rod 14, which rods, in connection with the short lever 13 connecting them, are of a length slightly greater than the top or lid 11 and when thrown to their limit project into clips or locks 15, secured to the doors 4. Since the short lever 13 is rigidly carried by the knob 12, when the said knob is turned the rods 14 will be drawn out of the locks 15 and the lid or cover can be lifted up and removed from the box. The said rods 14 operate in guide-clips 16, carried by the lid 11.

I provide a means for holding the doors 4 in their upright position, comprising the angle-hooks 17, carried by the lid 11, and which project down over the outside of the doors and hold them in a vertical position when the lid is in use.

The fans to be carried by my improved tray are retained open by any suitable means, as by a spreader 18, which spreader is then placed, as shown in Fig. 1, back of a pair of standards 8 or 10. The fans are placed around the tray, making use of each pair of standards on the sides, then the center standards are used in the same way, then again the side standards come into use as before, and so on.

Instead of using a box of the above description I may use an ordinary telescope-grip provided with the standard-seats in its bottom and having the ordinary lid or cover held in position by straps or any other suitable means. This arrangement may, in fact, be deemed preferable to the one above set forth and would be found quite as convenient.

This device is very useful where a fan must be transported from one place to another and exhibited at all the different places. It retains the fans at all times in a position suitable for exhibition, and it is manifest the injury from wear and tear caused by repeatedly opening and closing the fan would be obviated.

The device is simple, useful, and easily understood and no great cost is necessitated in its construction.

I claim—

5 1. A fan-tray comprising a bottom, a pair of standards removably carried on each side of said bottom, doors pivotally secured to said bottom, a removable lid for said tray, and means for locking the same in position on the
10 tray, substantially as specified.

2. A fan-tray comprising a bottom, a pair of standards removably carried on each side of said bottom, a plurality of standards carried near the center of said bottom, a pair of
15 doors for said tray, a detachable lid for said

tray, and a means for locking the same in position, substantially as specified.

3. A fan-tray comprising a bottom, a pair of standard-seats carried by said bottom near each side thereof, corresponding standard- 20 seats carried in the center of said bottom, and standards removably carried by said standard-seats, substantially as specified.

In testimony whereof I affix my signature in presence of two witnesses.

JULIAN H. RIVERS.

Witnesses:

ALFRED A. EICKS,
J. D. RIPPEY.