

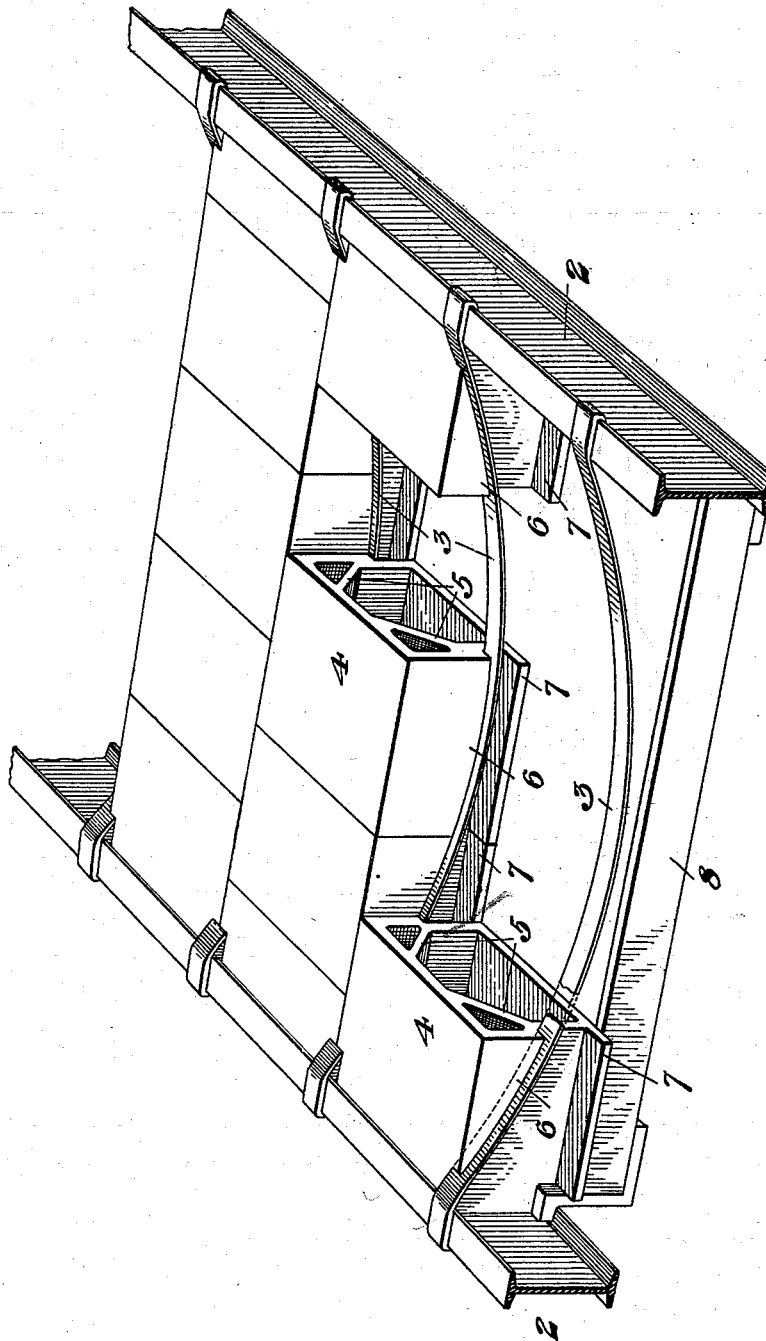
No. 650,072.

Patented May 22, 1900.

C. F. BUENTE.  
TILE CONSTRUCTION.

(Application filed May 29, 1899.)

(No Model.)



WITNESSES

*L. A. Sommers*  
*N. M. Morison*

INVENTOR

*Charles F. Buente*  
*by R. A. Keenel & R. A. Keenel*  
*his attys.*

# UNITED STATES PATENT OFFICE.

CHARLES F. BUENTE, OF PITTSBURG, PENNSYLVANIA.

## TILE CONSTRUCTION.

SPECIFICATION forming part of Letters Patent No. 650,072, dated May 22, 1900.

Application filed May 29, 1899. Serial No. 718,620. (No model.)

*To all whom it may concern:*

Be it known that I, CHARLES F. BUENTE, of Pittsburg, in the county of Allegheny and State of Pennsylvania, have invented a new and useful Improvement in Tile Construction, of which the following is a full, clear, and exact description, reference being had to the accompanying drawing, forming part of this specification, which shows a perspective view of fireproof flooring constructed in accordance with my invention, part of the tiles being removed to show their structure.

My invention relates to the construction of the flooring or ceilings of fireproof buildings, and is designed to provide a new construction of tile for this purpose, which shall be strong and may be cheaply made and easily put in place.

In the drawing, 2 2 represent the usual iron beams of floor structure and which are connected by the downwardly bent or curved tie-rods 3, the ends of which are bent to engage the flanges of the beams. The tiles 4 are arranged to be carried by these tie-rods, and each tile is of general box form, having a top, bottom, and sides, but with open ends and provided with internal strengthening-webs 5, which extend from the sides upwardly and inwardly toward the center of the top, thus distributing the strain and greatly strengthening the tile. At each side the tile is provided with lugs 6, molded integrally therewith and having curved lower faces to fit upon the tie-rods. The depth of these lugs is varied according to the position which they occupy upon the tie-rods. Thus the lugs of those at the center extend down near the lower end, while the lugs of those at the end are shorter, as clearly shown in the drawing. Each tile is also provided at its bottom with a laterally-projecting side flange 7, which is arranged to close the joint between it and the tile of the next row. The tiles may be provided with this bottom flange at each side, in which case the flanges would be one-half the width of those shown; but I prefer to make them with a wide flange at one side only. It will be noted that there is a free

open space between the curved lower faces of the upper lugs and the flanges. This is an important feature, for it enables me to easily position the blocks or tile after the tie-rods are secured in place, the flange being brought under the tie-rod and the tile then tilted into its position. A temporary support 8 may be used while placing the tile of each row, this being moved along as each row is inserted. The tiles are preferably molded so that those of one row will break joint with those of the adjacent rows.

The advantages of my invention will be apparent to those skilled in the art, since a cheap and strong form of tile is afforded, which may be easily put in place and does away with arch construction.

Many changes may be made in the size and shape of the tile without departing from my invention, since

What I claim is—

1. A hollow box-tile for floor construction having a lower laterally-projecting horizontal flange and provided with an upper lateral lug with a horizontal upper face level with the top of the tile and an inclined lower face, the space between the lug and flange being unobstructed; substantially as described.

2. A hollow box-tile for floor construction, having a lower lateral flange with a substantially-horizontal upper face, and provided at each side with upper lateral lugs, having inclined lower faces arranged to rest on curved tie-rods; substantially as described.

3. A tile floor composed of hollow tiles supported on curved tie-rods, each tile having upper lateral lugs with inclined lower faces, and a lower horizontal lateral flange to close the space between the tiles, the upper lugs having horizontal upper faces and gradually increasing in depth toward the central portion of the tie-rods; substantially as described.

In testimony whereof I have hereunto set my hand.

C. F. BUENTE.

Witnesses:

H. M. CORWIN,  
G. B. BLEMMING.