



US0D1077095S

(12) **United States Design Patent**  
**Sun**

(10) **Patent No.:** **US D1,077,095 S**

(45) **Date of Patent:** **\*\* May 27, 2025**

(54) **COVER FOR INDOOR CYCLING BIKE**

FOREIGN PATENT DOCUMENTS

(71) Applicant: **Sunny Distributor Inc.**, City of Industry, CA (US)

KR 300727339.0000 \* 2/2014

(72) Inventor: **Yu Sun**, City of Industry, CA (US)

OTHER PUBLICATIONS

(73) Assignee: **Sunny Distributor Inc.**, CA (US)

Sunny Health & Fitness Magnetic Rear Belt Drive Indoor Cycling Exercise Bike, amazon.com, first available Sep. 22, 2018 [online], [site visited Jul. 17, 2024], Available from internet, URL: https://www.amazon.com/Sunny-Health-Fitness-Magnetic-Capacity/dp/B07HL5RHXY (Year: 2018).\*

(\*\*) Term: **15 Years**

Bonvork Magnetic Exercise Bike, amazon.com, first available Sep. 26, 2023 [online], [site visited Jul. 17, 2024], Available from internet, URL: https://www.amazon.com/dp/B0CJTXCCN2 (Year: 2023).\*

(21) Appl. No.: **29/874,757**

(22) Filed: **Apr. 24, 2023**

(30) **Foreign Application Priority Data**

\* cited by examiner

Jan. 3, 2023 (CN) ..... 202330001756.8

(51) **LOC (15) Cl.** ..... **21-02**

*Primary Examiner* — Samantha Q Lawrence

(52) **U.S. Cl.**

*Assistant Examiner* — Thanh Luu Wong

USPC ..... **D21/697**; D21/663

(58) **Field of Classification Search**

(57) **CLAIM**

USPC ..... D21/662, 663, 664, 665, 667, 697;  
D12/107, 111, 115, 117, 120

The ornamental design for a cover for indoor cycling bike as shown and described.

CPC ..... A63B 22/06; A63B 22/0605; A63B 69/16;  
A63B 23/0476; A63B 2022/0641; A63B  
2022/0647; A63B 2022/0658

**DESCRIPTION**

See application file for complete search history.

FIG. 1 is a front elevational view of the cover for indoor cycling bike showing my new design;

(56) **References Cited**

U.S. PATENT DOCUMENTS

D320,024 S *	9/1991	Segal	.....	D15/5
D438,581 S *	3/2001	Shaw	.....	D21/663
D446,266 S *	8/2001	Lin	.....	D21/663
D450,100 S *	11/2001	Hsu	.....	D21/697
D450,101 S *	11/2001	Hsu	.....	D21/697
D451,972 S *	12/2001	Easley	.....	D21/697
D454,605 S *	3/2002	Lee	.....	D21/697
D484,931 S *	1/2004	Tsai	.....	D21/697
D840,277 S *	2/2019	Li	.....	D12/107
D860,060 S *	9/2019	Luman	.....	D12/114
D860,339 S *	9/2019	Sun	.....	D21/667

FIG. 2 is a rear elevational view thereof;

FIG. 3 is a left side elevational view thereof;

FIG. 4 is a right side elevational view thereof;

FIG. 5 is a top plan view thereof;

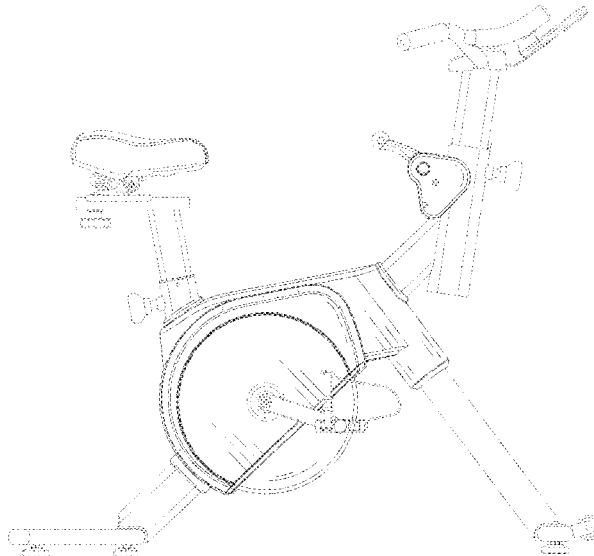
FIG. 6 is a bottom plan view thereof;

FIG. 7 is a top and front perspective view thereof; and,

FIG. 8 is a bottom and rear perspective view thereof.

The broken lines in the figures illustrate portions of the cover for indoor cycling bike that form no part of the claimed design.

**1 Claim, 8 Drawing Sheets**



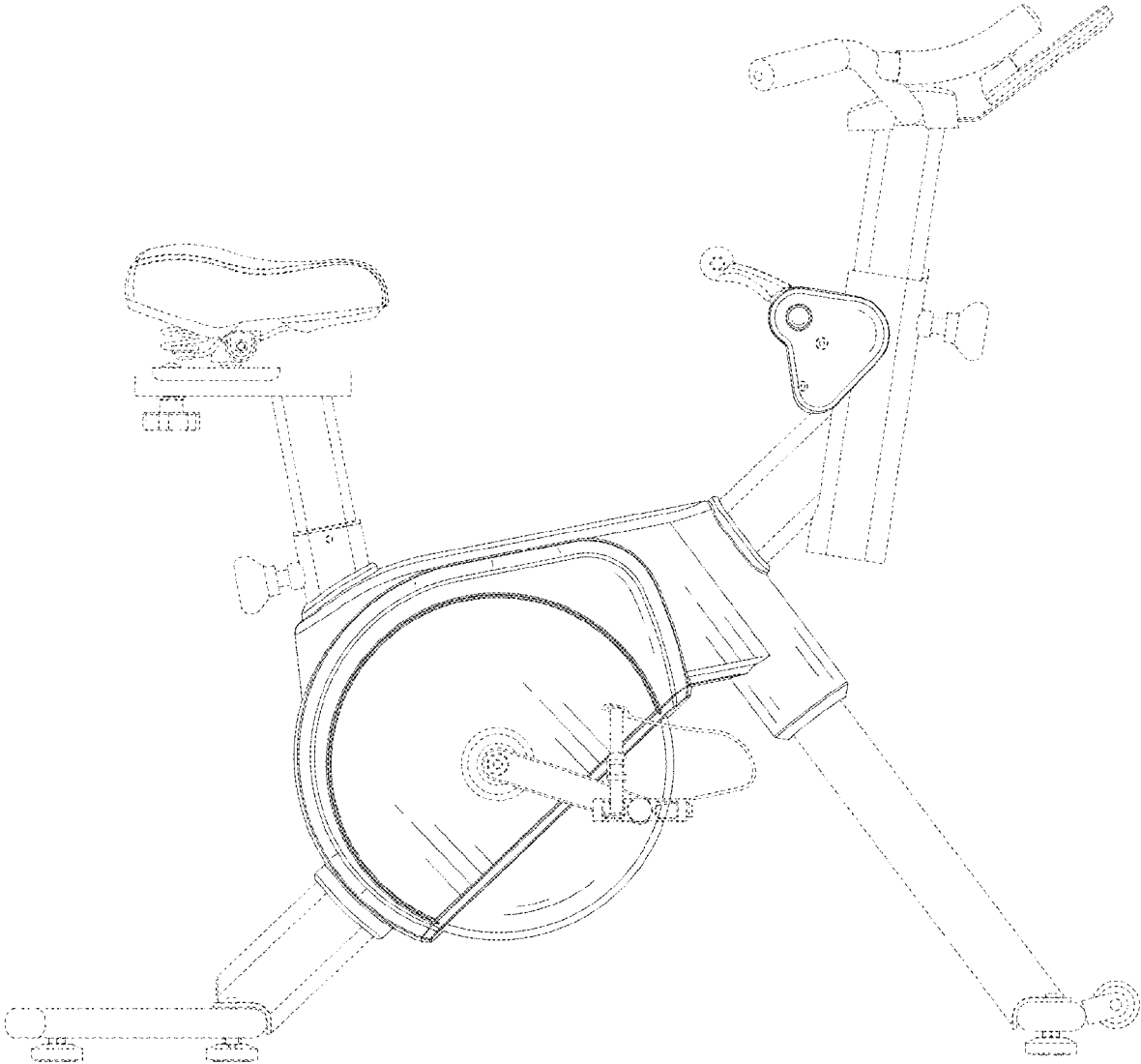


FIG. 1

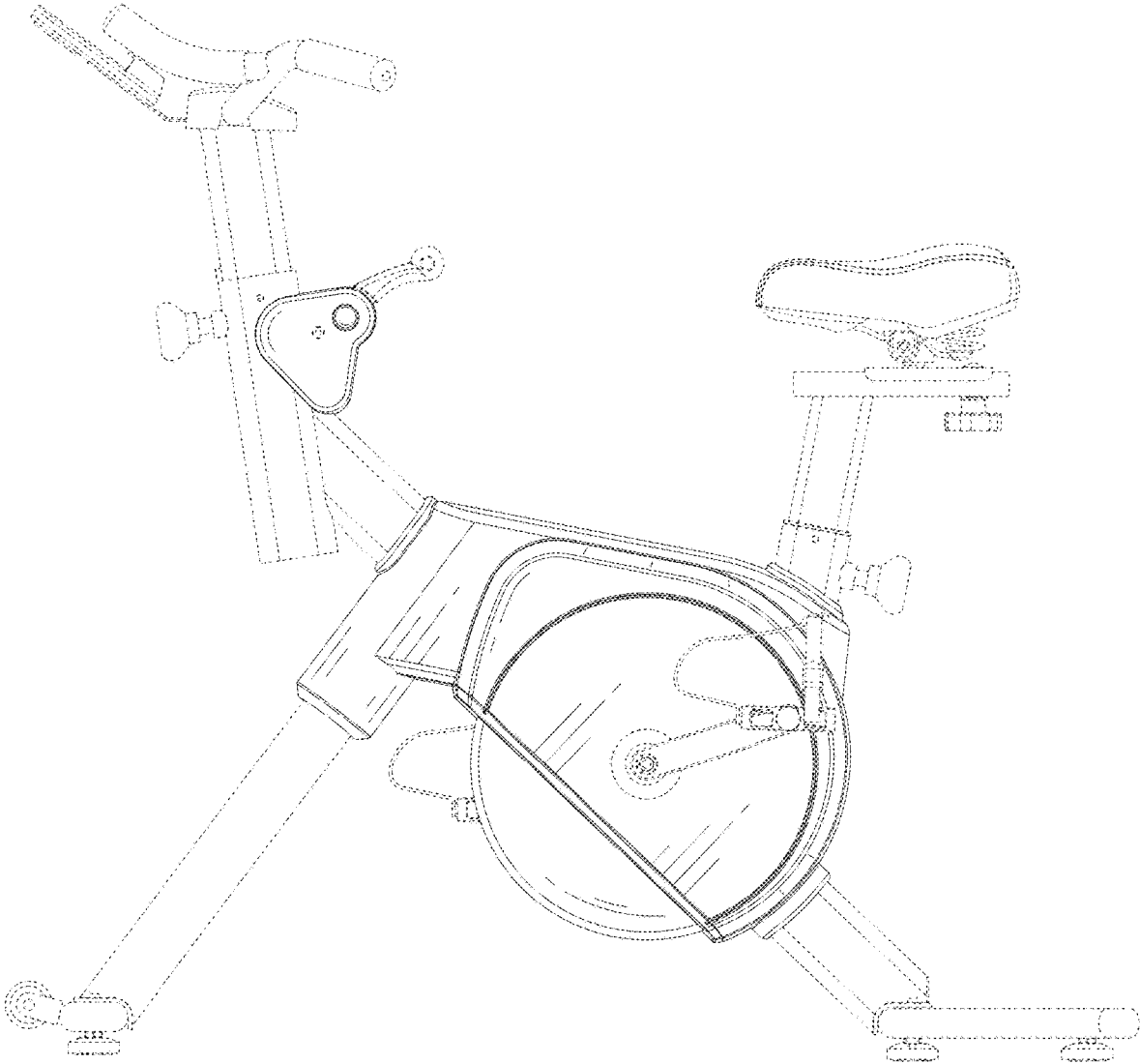


FIG. 2

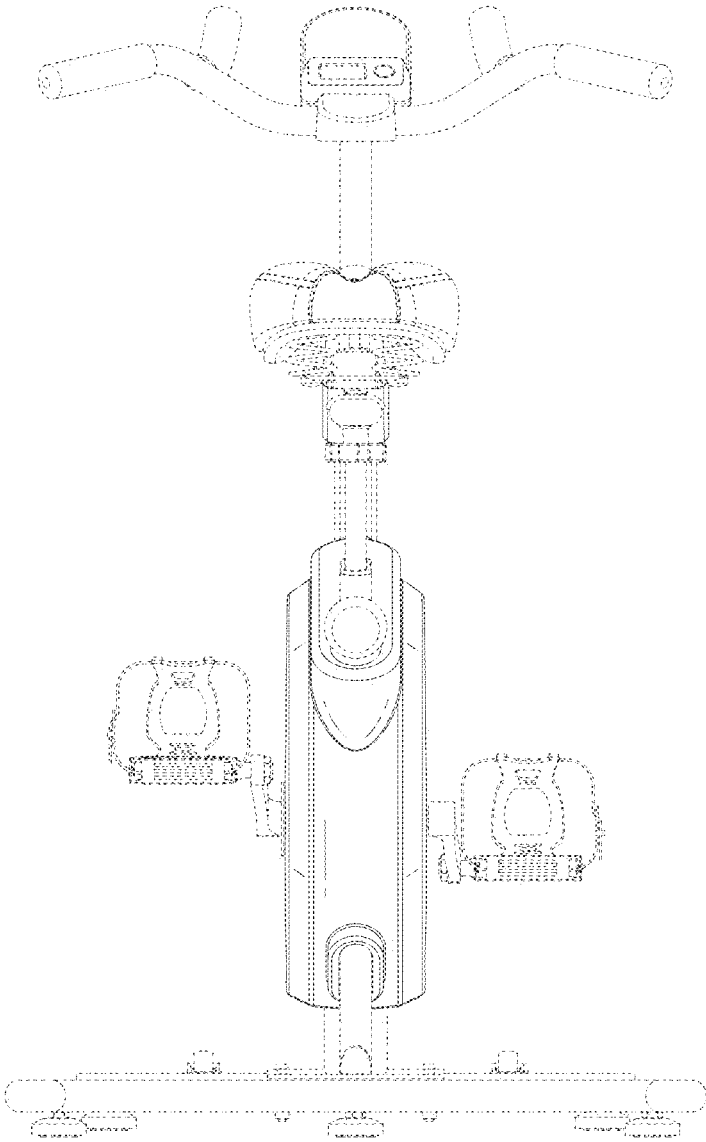


FIG. 3

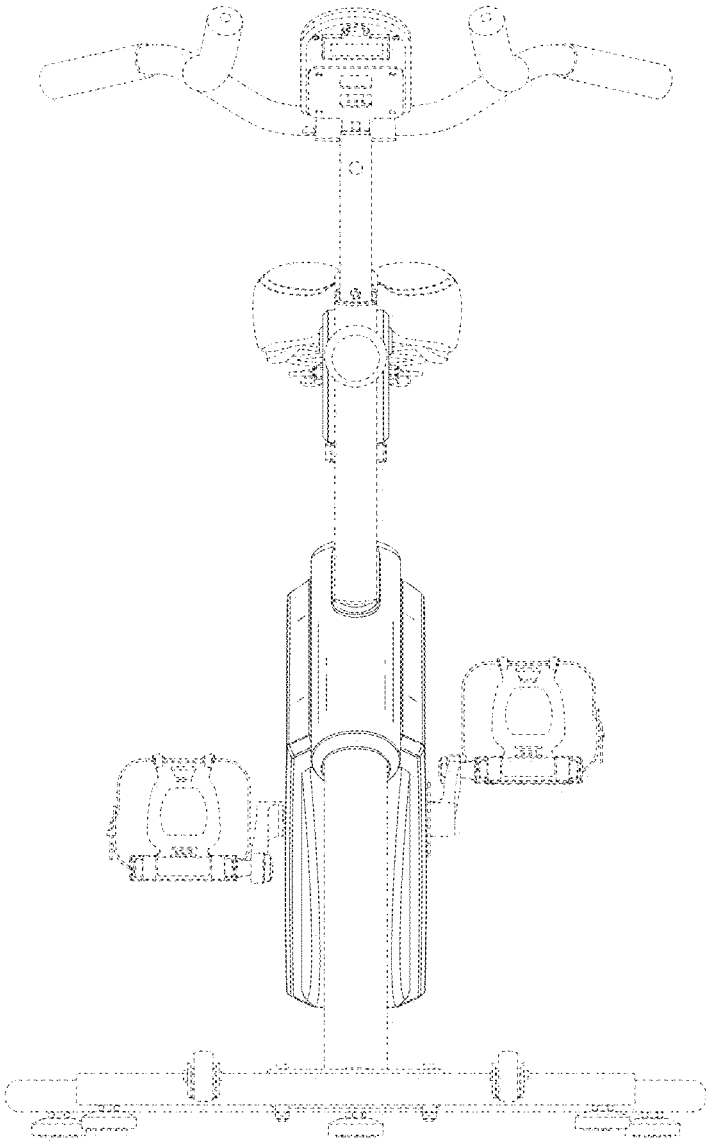


FIG. 4

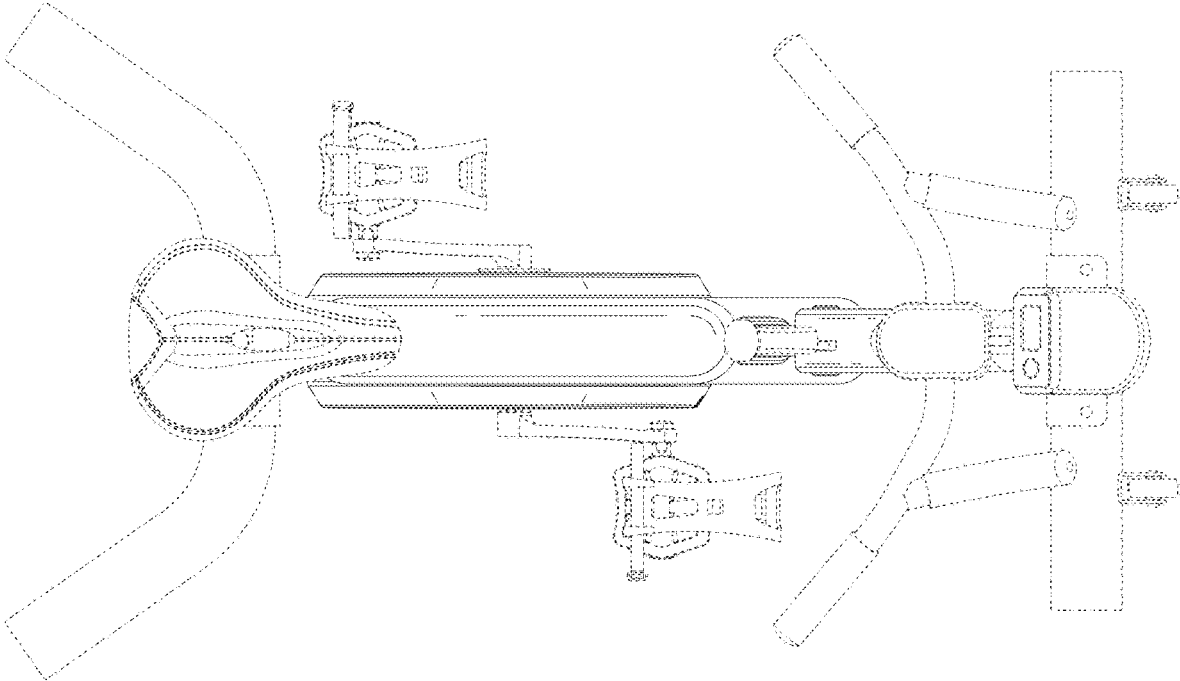


FIG. 5

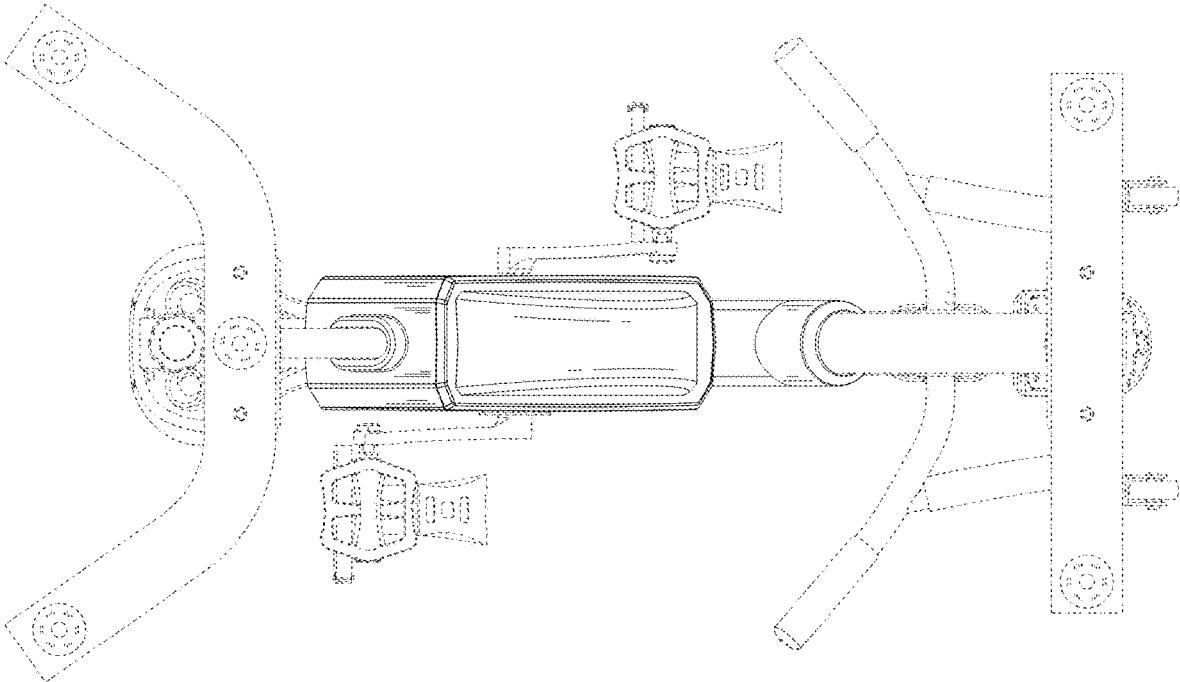


FIG. 6

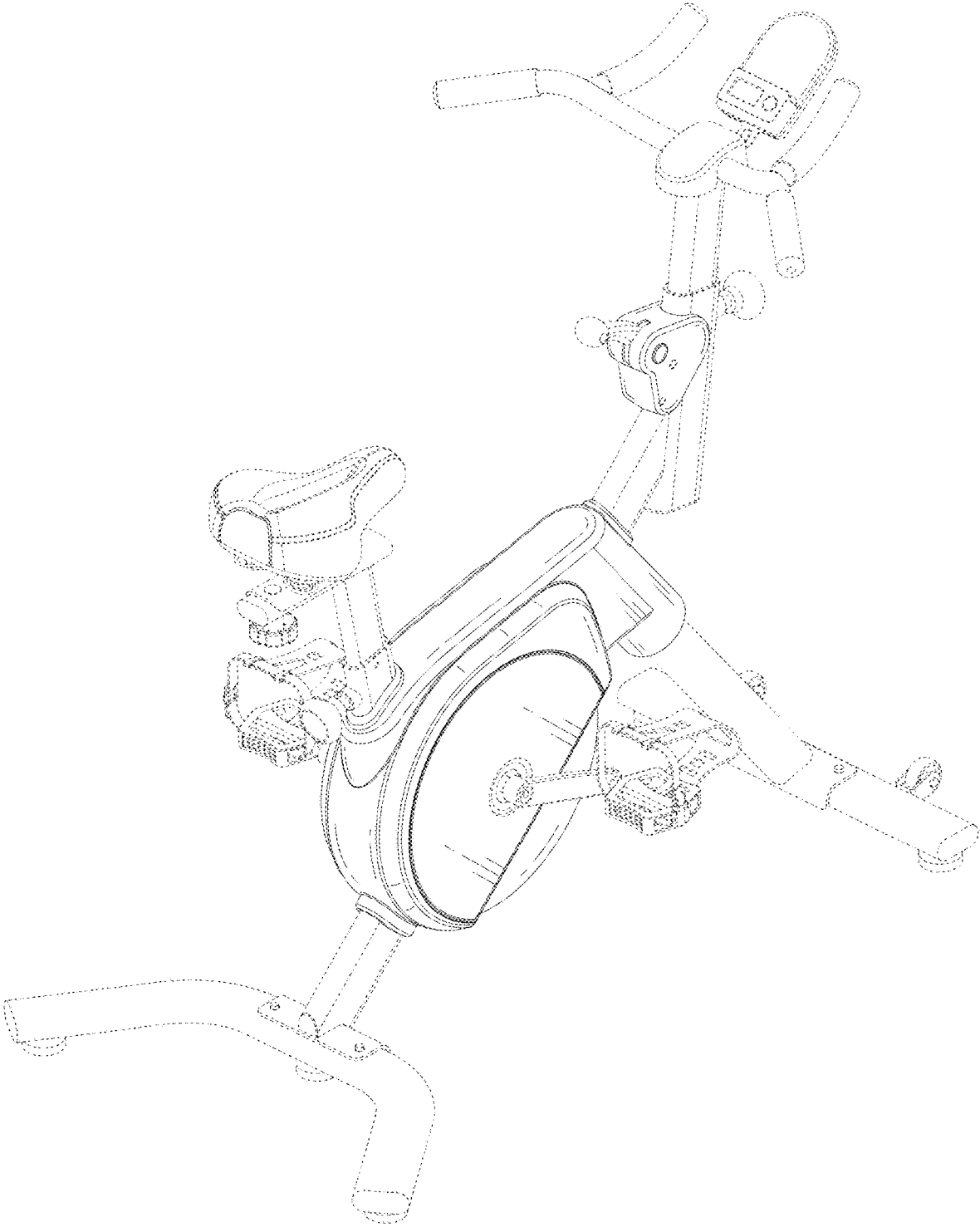


FIG. 7



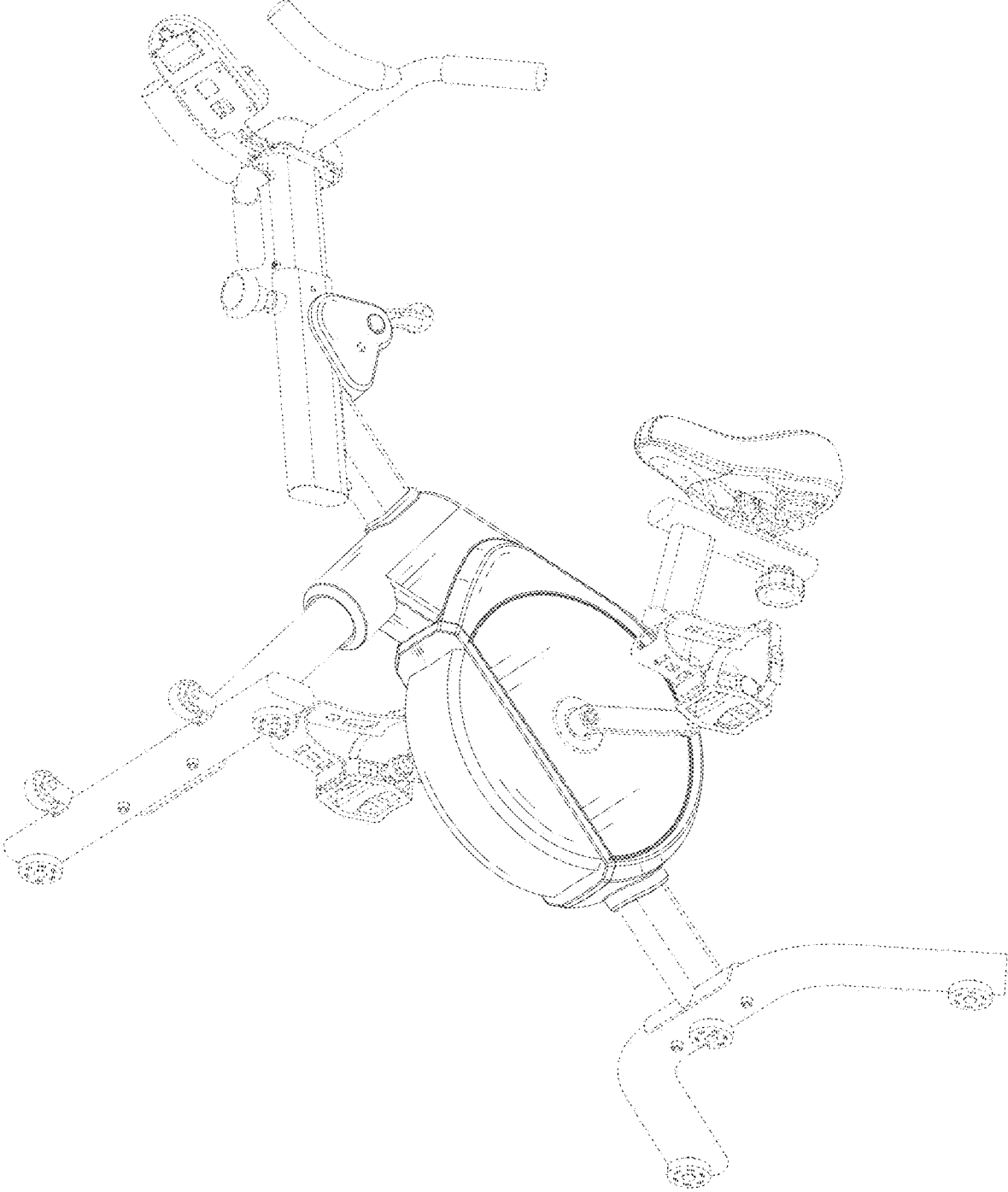


FIG. 8